

CD138 Mouse mAb

产品信息

产品名称	产品编号	规格
CD138 Mouse mAb	31551ES50	50 μ L
	31551ES60	100 μ L

产品简介

The protein encoded by this gene is a transmembrane (type I) heparan sulfate proteoglycan and is a member of the syndecan proteoglycan family. The syndecans mediate cell binding, cell signaling, and cytoskeletal organization and syndecan receptors are required for internalization of the HIV-1 tat protein. The syndecan-1 protein functions as an integral membrane protein and participates in cell proliferation, cell migration and cell-matrix interactions via its receptor for extracellular matrix proteins. Altered syndecan-1 expression has been detected in several different tumor types. While several transcript variants may exist for this gene, the full-length nature of only two have been described to date. These two represent the major variants of this gene and encode the same protein.

产品性质

别名	SDC; CD138; SYND1; syndecan
SwissProt ID	P18827
基因 ID	6382
免疫原	Purified recombinant fragment of human SDC1 expressed in E. Coli.
缓冲液	Purified antibody in PBS with 0.05% sodium azide.
克隆类型	Monoclonal Antibody
亚型	IgG ₁
克隆号	9W4
宿主	Mouse
物种反应	Human, Mouse
推荐应用	WB, IHC-P, ICC/IF, FC, ELISA
纯化方式	Affinity Purified

应用

稀释比 WB:1/5000-1/1000; IHC:1/100-1/200; IF: 1/50-1/200; FC: 1/50-1/100; ELISA:1/10000

储存条件

-25~-15°C保存

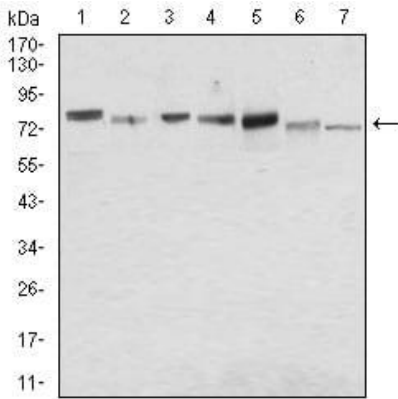
注意事项

1. 避免反复冻融。

2. 本产品仅作科研用途。
3. 为了您的安全和健康，请穿实验服并佩戴一次性手套操作。

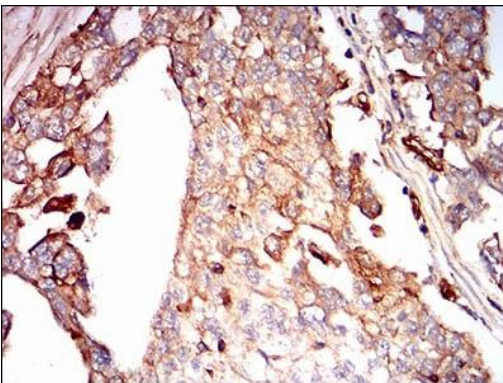
产品数据

Western blot



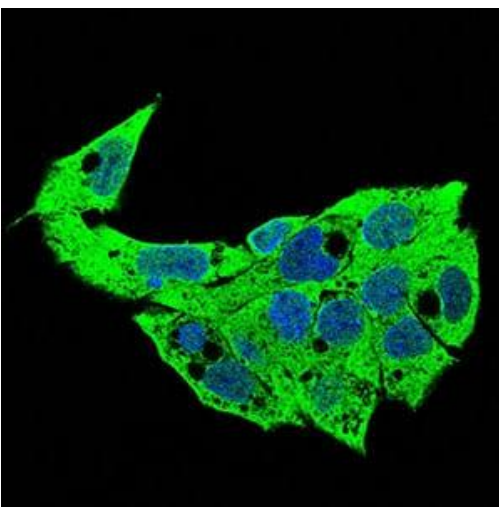
Western blot analysis of CD138 in MCF-7, HeLa, HepG2, T47D, SW620, Jurkat and NIH/3T3 cell lysate using CD138 antibody.

Immunohistochemistry



Immunohistochemistry analysis of paraffin-embedded human ovarian cancer tissues using CD138 antibody.

Immunocytochemistry



Immunocytochemistry analysis of CD138 in HepG2 cells using CD138 antibody (green), and DAPI (blue).