

Phospho-IKB alpha(Ser32) Rabbit mAb

产品信息

产品名称	产品编号	规格
Phospho-IKB alpha(Ser32) Rabbit mAb	31507ES50	50 μ L
	31507ES60	100 μ L

产品简介

NFKB1 (MIM 164011) or NFKB2 (MIM 164012) is bound to REL (MIM 164910), RELA (MIM 164014), or RELB (MIM 604758) to form the NFKB complex. The NFKB complex is inhibited by I-kappa-B proteins (NFKBIA or NFKBIB, MIM 604495), which inactivate NF-kappa-B by trapping it in the cytoplasm.

产品性质

别名	NFKBIA
SwissProt ID	P25963
基因 ID	4792
免疫原	A synthetic phosphopeptide corresponding to residues surrounding Ser32 of human IKB alpha.
缓冲液	50mM Tris-Glycine(pH 7.4), 0.15M NaCl, 40% Glycerol, 0.01% Sodium azide and 0.05% BSA.
克隆类型	Monoclonal Antibody
亚型	IgG
克隆号	2D9
宿主	Rabbit
物种反应	Human, Mouse
推荐应用	WB,IP
纯化方式	Affinity Purified

应用

稀释比 WB:1/500-1/1000; IP:1/20

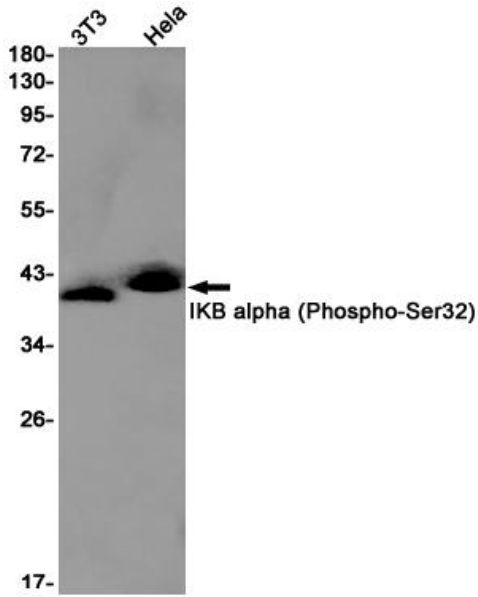
储存条件

-25~-15°C保存

注意事项

1. 避免反复冻融。
2. 本产品仅作科研用途。
3. 为了您的安全和健康，请穿实验服并佩戴一次性手套操作。

Western blot



Western blot analysis of IKB alpha(Phospho-Ser32) in 3T3, HeLa lysates using Phospho-IKB alpha(Ser32) antibody.