

## Phospho-IKB alpha(Ser36) Rabbit mAb

### 产品信息

| 产品名称                                | 产品编号      | 规格          |
|-------------------------------------|-----------|-------------|
| Phospho-IKB alpha(Ser36) Rabbit mAb | 31483ES50 | 50 $\mu$ L  |
|                                     | 31483ES60 | 100 $\mu$ L |

### 产品简介

NFKB1 or NFKB2 is bound to REL (MIM 164910), RELA (MIM 164014), or RELB (MIM 604758) to form the NFKB complex. The NFKB complex is inhibited by I-kappa-B proteins (NFKBIA or NFKBIB, MIM 604495), which inactivate NF-kappa-B by trapping it in the cytoplasm..

### 产品性质

|              |  |
|--------------|--|
| 别名           | NFKBIA   |
| SwissProt ID | P25963   |
| 基因 ID        | 4792   |
| 免疫原          | A synthetic phosphopeptide corresponding to residues surrounding Ser36 of human IKB alpha. |
| 缓冲液          | 50mM Tris-Glycine(pH 7.4), 0.15M NaCl, 40% Glycerol, 0.01% Sodium azide and 0.05% BSA.     |
| 克隆类型         | Monoclonal Antibody  |
| 亚型           | IgG  |
| 克隆号          | 4K3  |
| 宿主           | Rabbit   |
| 物种反应         | Human, Mouse   |
| 推荐应用         | WB   |
| 纯化方式         | Affinity Purified  |

### 应用

稀释比 WB:1/500-1/1000

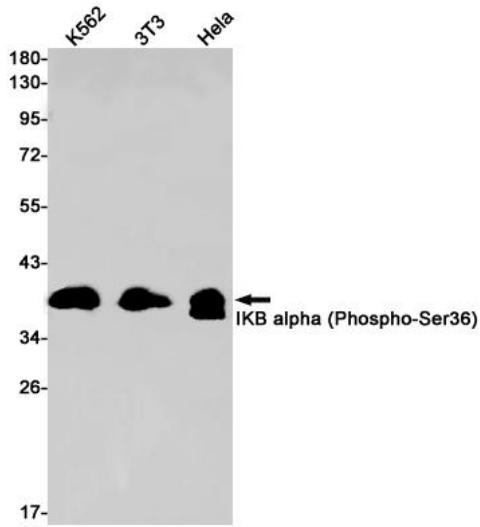
### 储存条件

-25~-15°C保存

### 注意事项

1. 避免反复冻融。
2. 本产品仅作科研用途。
3. 为了您的安全和健康，请穿实验服并佩戴一次性手套操作。

## Western blot



Western blot analysis of IKB alpha(Phospho-Ser36) in K562, 3T3, HeLa lysates using Phospho-IKB alpha(Ser36) antibody.