

## Synapsin 1 Rabbit pAb

### 产品信息

产品名称	产品编号	规格
Synapsin 1 Rabbit pAb	31468ES50	50 $\mu$ L
	31468ES60	100 $\mu$ L

### 产品简介

This gene is a member of the synapsin gene family. Synapsins encode neuronal phosphoproteins which associate with the cytoplasmic surface of synaptic vesicles. Family members are characterized by common protein domains, and they are implicated in synaptogenesis and the modulation of neurotransmitter release, suggesting a potential role in several neuropsychiatric diseases.

### 产品性质

别名	SYN1; Synapsin-1; Brain protein 4.1; Synapsin I;
SwissProt ID	P17600
基因 ID	6853
免疫原	The antiserum was produced against synthesized peptide derived from human Synapsin.
缓冲液	Liquid in PBS containing 50% glycerol, 0.5% BSA and 0.02% sodium azide, pH 7.3.
分子量	Calculated MW: 74 kDa; Observed MW: 74 kDa
克隆类型	Polyclonal Antibody
亚型	IgG
克隆号	/
宿主	Rabbit
物种反应	Human, Mouse, Rat
推荐应用	WB, IHC-F, IHC-P, ICC/IF, ELISA
纯化方式	Affinity Purified

### 应用

稀释比 WB:1/500-1/1000; IHC:1/50-1/100; IF:1/50-1/200; ELISA:1/10000

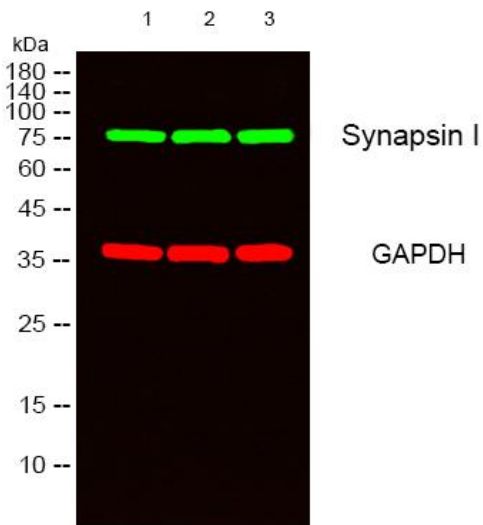
### 储存条件

-25~-15 $^{\circ}$ C保存

### 注意事项

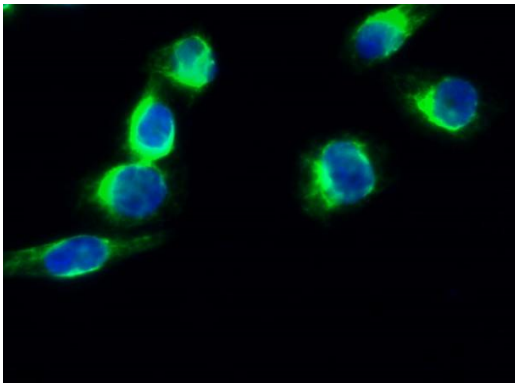
1. 避免反复冻融。
2. 本产品仅作科研用途。
3. 为了您的安全和健康，请穿实验服并佩戴一次性手套操作。

## Western blot



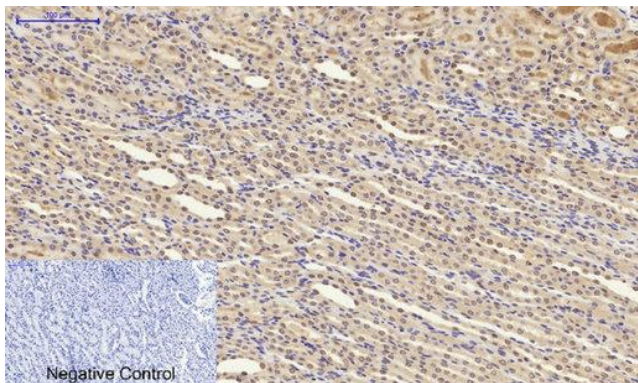
Western blot analysis of Synapsin 1 in HeLa, 293, 3T3 lysates using Synapsin 1 antibody.

## Immunofluorescence



Immunofluorescence analysis of Synapsin 1 in HeLa using Synapsin 1 antibody (green).

## Immunofluorescence



Immunohistochemistry analysis of paraffin-embedded rat kidney tissue using Synapsin 1 antibody. High-pressure and temperature Sodium Citrate pH 6.0 was used for antigen retrieval.