

Fructose 6 Phosphate Kinase Rabbit mAb

产品信息

产品名称	产品编号	规格
Fructose 6 Phosphate Kinase Rabbit mAb	31467ES50	50 μ L
	31467ES60	100 μ L

产品简介

Carbohydrate degradation; glycolysis; D-glyceraldehyde 3-phosphate and glycerone phosphate from D-glucose: step 3/4.

产品性质

别名	GSD7; PFK1; PFKA; PFKX; PFK-1;
SwissProt ID	P08237
基因 ID	5213
免疫原	A synthetic peptide of human Fructose 6 Phosphate Kinase.
缓冲液	50mM Tris-Glycine(pH 7.4), 0.15M NaCl, 40% Glycerol, 0.01% Sodium azide and 0.05% BSA.
分子量	Calculated MW: 85 kDa; Observed MW: 85 kDa
克隆类型	Monoclonal Antibody
亚型	IgG
克隆号	6B4
宿主	Rabbit
物种反应	Human, Mouse, Rat
推荐应用	WB, ICC/IF
纯化方式	Affinity Purified

应用

稀释比 WB:1/500-1/1000; IF:1/50-1/200

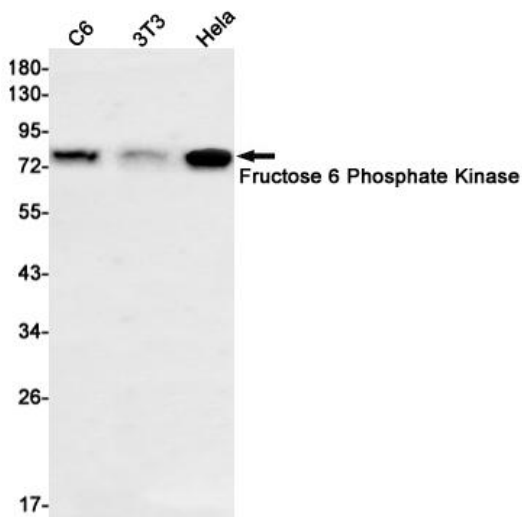
储存条件

-25~-15°C保存

注意事项

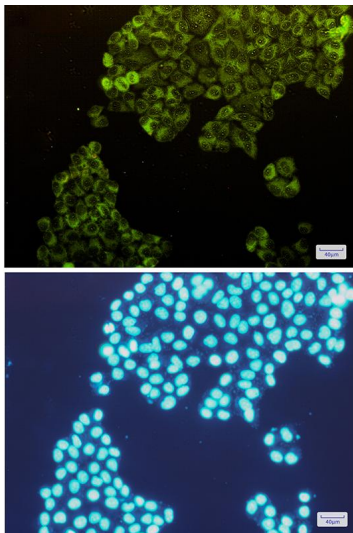
1. 避免反复冻融。
2. 本产品仅作科研用途。
3. 为了您的安全和健康，请穿实验服并佩戴一次性手套操作。

Western blot



Western blot analysis of Fructose 6 Phosphate Kinase in C6, 3T3, HeLa lysates using Fructose 6 Phosphate Kinase antibody.

Immunocytochemistry



Immunocytochemistry analysis of Fructose 6 Phosphate Kinase (green) in HeLa using Fructose 6 Phosphate Kinase antibody, and DAPI (blue).