

ATG3 Rabbit mAb

产品信息

产品名称	产品编号	规格
ATG3 Rabbit mAb	31465ES50	50 μ L
	31465ES60	100 μ L

产品简介

E2-like enzyme involved in autophagy and mitochondrial homeostasis. Catalyzes the conjugation of ATG8-like proteins (GABARAP, GABARAPL1, GABARAPL2 or MAP1LC3A) to phosphatidylethanolamine (PE). Catalyzing the conjugation of ATG12 to itself, ATG12 conjugation to ATG3 playing a role in mitochondrial homeostasis but not in autophagy. ATG7 (E1-like enzyme) facilitates this reaction by forming an E1-E2 complex with ATG3.

产品性质

别名	APG3; APG3L; PC3-96; APG3-LIKE;
SwissProt ID	Q9NT62
基因 ID	64422
免疫原	A synthetic peptide of human ATG3.
缓冲液	50mM Tris-Glycine(pH 7.4), 0.15M NaCl, 40% Glycerol, 0.01% Sodium azide and 0.05% BSA.
分子量	Calculated MW: 36 kDa; Observed MW: 40 kDa
克隆类型	Monoclonal Antibody
亚型	IgG
克隆号	9E7
宿主	Rabbit
物种反应	Human, Mouse, Rat
推荐应用	WB, IHC-F, IHC-P, ICC/IF
纯化方式	Affinity Purified

应用

稀释比 WB:1/500-1/1000; IHC:1/50-1/100; IF:1/50-1/200

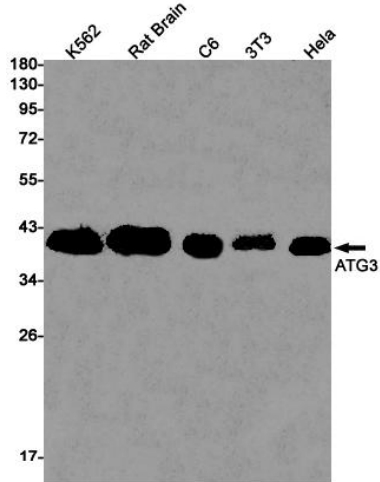
储存条件

-25~-15°C保存

注意事项

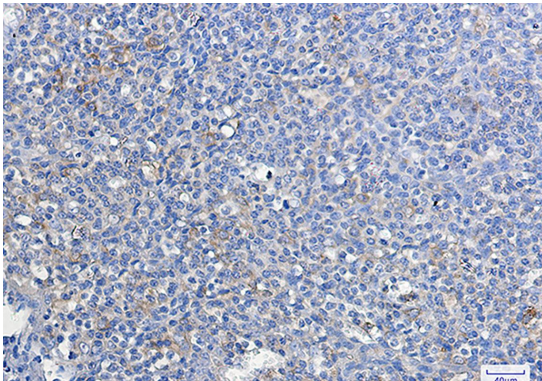
1. 避免反复冻融。
2. 本产品仅作科研用途。
3. 为了您的安全和健康，请穿实验服并佩戴一次性手套操作。

Western blot



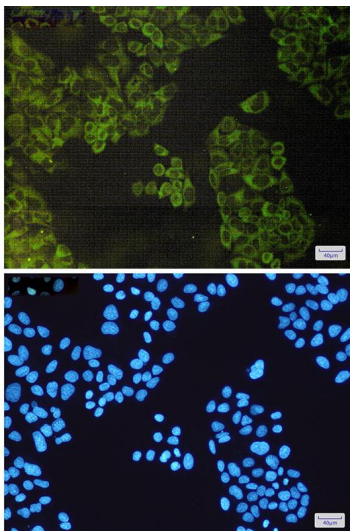
Western blot analysis of ATG3 in K562, Rat Brain, C6, 3T3, HeLa lysates using ATG3 antibody.

Immunohistochemistry



Immunohistochemistry analysis of paraffin-embedded Human tonsil using ATG3 antibody. High-pressure and temperature Sodium Citrate pH 6.0 was used for antigen retrieval.

Immunocytochemistry



Immunocytochemistry analysis of ATG3(green) in HeLa using ATG3 antibody, and DAPI(blue).