

Phospho-eIF2A(Ser51) Rabbit mAb

产品信息

产品名称	产品编号	规格
Phospho-eIF2A(Ser51) Rabbit mAb	31447ES50	50 μ L
	31447ES60	100 μ L

产品简介

EIF2A a translation initiation factor that functions in the early steps of protein synthesis by forming a ternary complex with GTP and initiator tRNA. This complex binds to a 40s ribosomal subunit, followed by mRNA binding to form a 43S preinitiation complex.

产品性质

别名	EIF2S1; EIF2A; eIF-2-alpha; eIF-2A; eIF-2alpha
SwissProt ID	P05198
基因 ID	1965
免疫原	A synthetic phosphopeptide corresponding to residues surrounding Ser51 of human EIF2S1.
缓冲液	50mM Tris-Glycine(pH 7.4), 0.15M NaCl, 40% Glycerol, 0.01% Sodium azide and 0.05% BSA.
分子量	Calculated MW: 36 kDa; Observed MW: 36 kDa
克隆类型	Monoclonal Antibody
亚型	IgG
克隆号	5H9
宿主	Rabbit
物种反应	Human, Mouse, Rat
推荐应用	WB
纯化方式	Affinity Purified

应用

稀释比 WB:1/500-1/1000

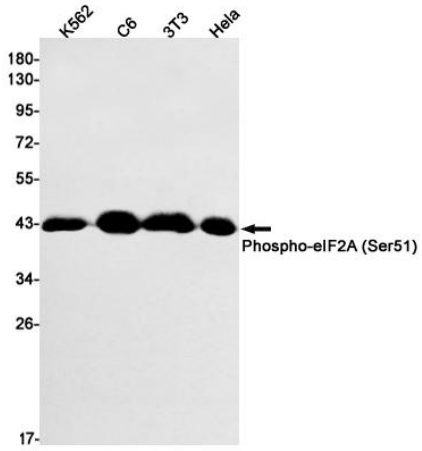
储存条件

-25~-15°C保存

注意事项

1. 避免反复冻融。
2. 本产品仅作科研用途。
3. 为了您的安全和健康，请穿实验服并佩戴一次性手套操作。

Western blot



Western blot analysis of Phospho-eIF2A(Ser51) in K562, C6, 3T3, HeLa lysates using Phospho-eIF2A(Ser51) antibody.