

## EpCAM Rabbit mAb

### 产品信息

产品名称	产品编号	规格
EpCAM Rabbit mAb	31444ES50	50 $\mu$ L
	31444ES60	100 $\mu$ L

### 产品简介

May act as a physical homophilic interaction molecule between intestinal epithelial cells (IECs) and intraepithelial lymphocytes (IELs) at the mucosal epithelium for providing immunological barrier as a first line of defense against mucosal infection. Plays a role in embryonic stem cells proliferation and differentiation. Up-regulates the expression of FABP5, MYC and cyclins A and E.

### 产品性质

别名	EPCAM; GA733-2; M1S2; M4S1; MIC18; TACSTD1; TROP1; CD326
SwissProt ID	P16422
基因 ID	4072
免疫原	Recombinant protein of human EpCAM.
缓冲液	50mM Tris-Glycine(pH 7.4), 0.15M NaCl, 40% Glycerol, 0.01% Sodium azide and 0.05% BSA.
分子量	Calculated MW:35 kDa; Observed MW: 35,39 kDa
克隆类型	Monoclonal Antibody
亚型	IgG
克隆号	8D1
宿主	Rabbit
物种反应	Human, Mouse, Rat
推荐应用	WB, IHC-F, IHC-P, ICC/IF, IP
纯化方式	Affinity Purified

### 应用

稀释比 WB:1/500-1/1000; IHC:1/50-1/100; IF:1/50-1/200; IP:1/20

### 储存条件

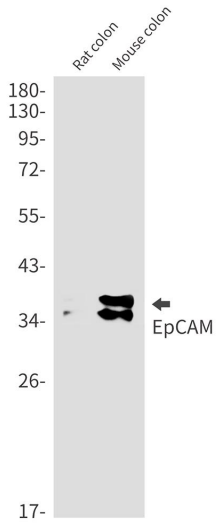
-25~-15°C保存

### 注意事项

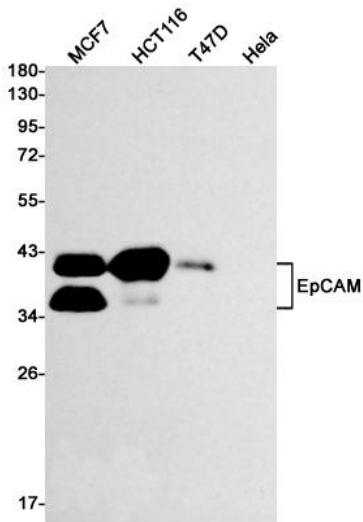
1. 避免反复冻融。
2. 本产品仅作科研用途。
3. 为了您的安全和健康，请穿实验服并佩戴一次性手套操作。

## 产品数据

### Western blot

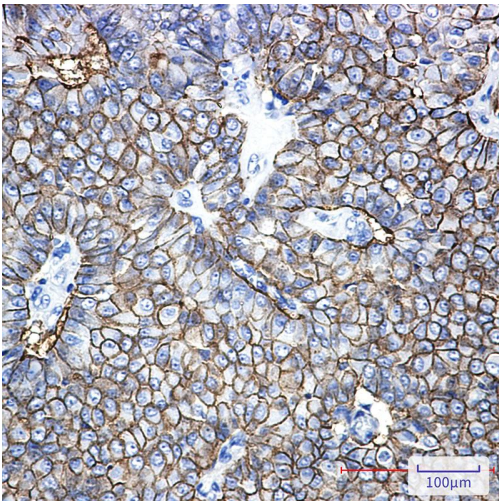


Western blot analysis of EpCAM in Rat colon, Mouse colon lysates using EpCAM antibody.



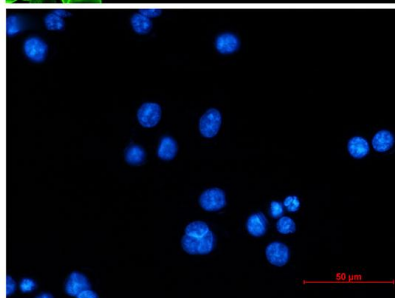
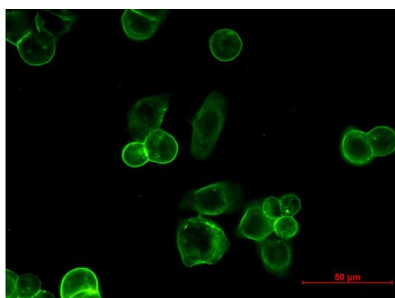
Western blot analysis of EpCAM in MCF-7, HCT116, T47D, HeLa lysates using EpCAM antibody.

### Immunohistochemistry



Immunohistochemistry analysis of paraffin-embedded Human breast cancer using EpCAM antibody. High-pressure and temperature Sodium Citrate pH 6.0 was used for antigen retrieval.

## Immunocytochemistry



Immunocytochemistry analysis of EpCAM (green) in MCF-7 using EpCAM antibody, and DAPI (blue).