

LAMP2A Rabbit mAb

产品信息

产品名称	产品编号	规格
LAMP2A Rabbit mAb	31441ES50	50 μ L
	31441ES60	100 μ L

产品简介

Lysosomal-associated membrane protein 2 (LAMP2, synonyms: LAMPB, CD107b) is a member of a family of membrane glycoproteins. This glycoprotein provides selectins with carbohydrate ligands. LAMP2 may play a role in tumor cell metastasis. It may also function in the protection, maintenance, and adhesion of the lysosome. Prior to posttranslational modification, Lysosome Associated Membrane Protein 2 (LAMP2) is a ~45 kDa polypeptide.

产品性质

别名	LAMP2; LAMP-2; Lysosome-associated membrane protein 2; CD107 antigen-like family member B; CD107b
SwissProt ID	P13473
基因 ID	3920
免疫原	A synthetic peptide of human LAMP2A.
缓冲液	50mM Tris-Glycine(pH 7.4), 0.15M NaCl, 40% Glycerol, 0.01% Sodium azide and 0.05% BSA.
分子量	Calculated MW: 45 kDa; Observed MW: 110 kDa
克隆类型	Monoclonal Antibody
亚型	IgG
克隆号	2J8
宿主	Rabbit
物种反应	Human, Mouse
推荐应用	WB, IHC-P, IP
纯化方式	Affinity Purified

应用

稀释比 WB:1/500-1/1000; IHC:1/50-1/100; IF:1/50-1/200

储存条件

-25~-15°C保存

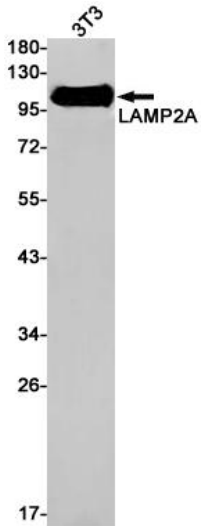
注意事项

1. 避免反复冻融。
2. 本产品仅作科研用途。

3. 为了您的安全和健康，请穿实验服并佩戴一次性手套操作。

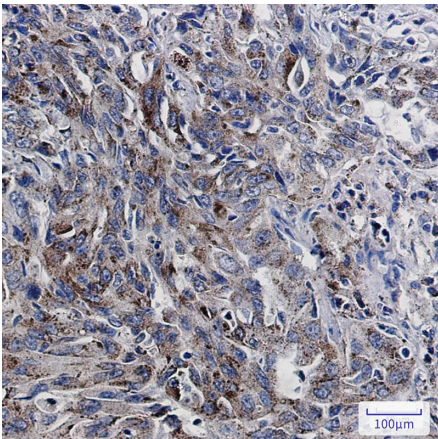
产品数据

Western blot



Western blot analysis of LAMP2 in 3T3 lysates using LAMP2A antibody.

Immunocytochemistry



Immunohistochemistry analysis of paraffin-embedded Human lung cancer using LAMP2 antibody. High-pressure and temperature Sodium Citrate pH 6.0 was used for antigen retrieval.