

p27 Kip 1 Rabbit mAb

产品信息

产品名称	产品编号	规格
p27 Kip 1 Rabbit mAb	31425ES50	50 μ L
	31425ES60	100 μ L

产品简介

The encoded protein binds to and prevents the activation of cyclin E-CDK2 or cyclin D-CDK4 complexes, and thus controls the cell cycle progression at G1. The degradation of this protein, which is triggered by its CDK dependent phosphorylation and subsequent ubiquitination by SCF complexes, is required for the cellular transition from quiescence to the proliferative state.

产品性质

别名	CDKN1B; KIP1; Cyclin-dependent kinase inhibitor 1B; Cyclin-dependent kinase inhibitor p27; p27Kip1
SwissProt ID	P46527
基因 ID	1027
免疫原	A synthetic peptide of human p27 KIP 1.
缓冲液	50mM Tris-Glycine(pH 7.4), 0.15M NaCl, 40% Glycerol, 0.01% Sodium azide and 0.05% BSA.
分子量	Calculated MW: 22 kDa; Observed MW: 27 kDa.
克隆类型	Monoclonal Antibody
亚型	IgG
宿主	Rabbit
物种反应	Human, Mouse, Rat
推荐应用	WB,IHC-P, IP
纯化方式	Affinity Purified

应用

稀释比 WB:1/500-1/1000; IHC:1/50-1/100; IP: 1/20

储存条件

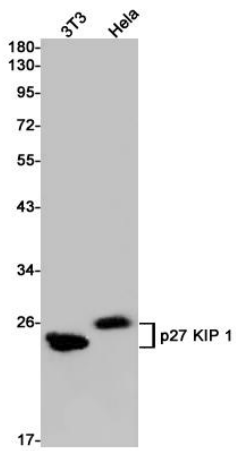
-25~-15°C保存

注意事项

1. 避免反复冻融。
2. 本产品仅作科研用途。
3. 为了您的安全和健康，请穿实验服并佩戴一次性手套操作。

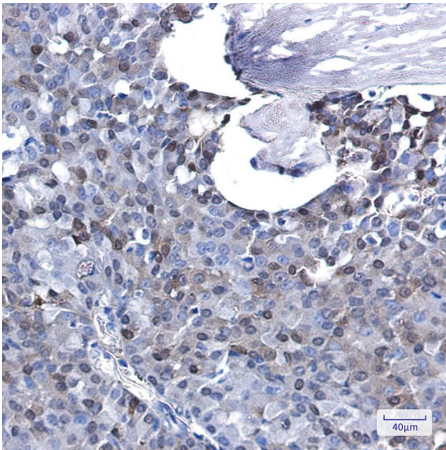
产品数据

Western blot



Western blot analysis of p27 KIP1 in 3T3, HeLa lysates using p27 Kip 1 antibody.

Immunohistochemistry



Immunohistochemistry analysis of paraffin-embedded Human breast cancer using p27 KIP1 antibody. High-pressure and temperature Sodium Citrate pH 6.0 was used for antigen retrieval.