

VCAM1 Rabbit pAb

产品信息

产品名称	产品编号	规格
VCAM1 Rabbit pAb	31422ES50	50 μ L
	31422ES60	100 μ L

产品简介

This gene is a member of the Ig superfamily and encodes a cell surface sialoglycoprotein expressed by cytokine-activated endothelium. This type I membrane protein mediates leukocyte-endothelial cell adhesion and signal transduction, and may play a role in the development of atherosclerosis and rheumatoid arthritis. Two alternatively spliced transcripts encoding different isoforms have been described for this gene.

产品性质

别名	VCAM1; L1CAM; Vascular cell adhesion protein 1; V-CAM 1; VCAM-1; INCAM-100; CD antigen CD106
SwissProt ID	P19320
基因 ID	7412
免疫原	A synthesized peptide derived from human VCAM1.
缓冲液	Rabbit IgG in phosphate buffered saline , pH 7.4, 150mM NaCl, 0.02% sodium azide and 50% glycerol.
分子量	Calculated MW: 81 kDa; Observed MW: 100 kDa.
克隆类型	Polyclonal Antibody
亚型	IgG
宿主	Rabbit
物种反应	Human, Mouse, Rat
推荐应用	WB,IHC-P, ICC/IF, IP, FC
纯化方式	Affinity Purified

应用

稀释比 WB:1/500-1/1000; IHC:1/50-1/100; IF:1/50-1/200; IP:1/20; FC:1/50-1/100

储存条件

-25~-15°C保存

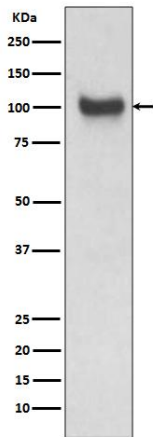
注意事项

1. 避免反复冻融。
2. 本产品仅作科研用途。

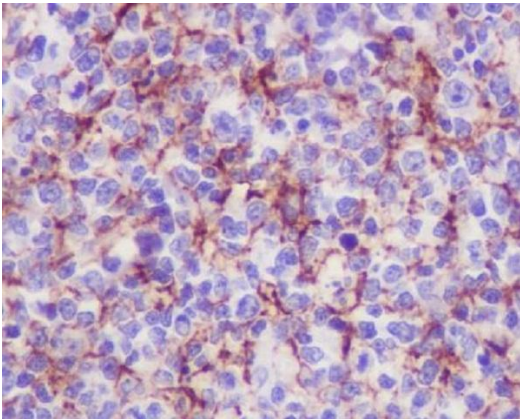
3. 为了您的安全和健康，请穿实验服并佩戴一次性手套操作。

产品数据

Western blot

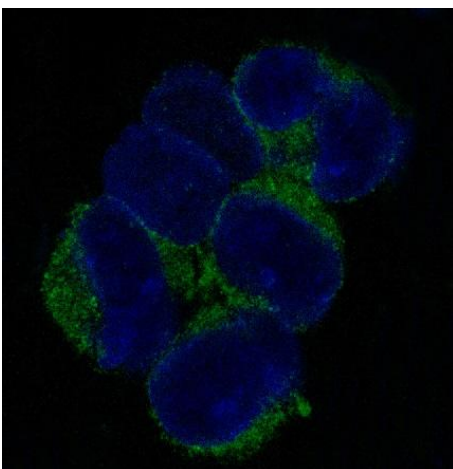


Western blot analysis of VCAM1 in mouse kidney lysates using VCAM1 antibody.



Immunohistochemistry analysis of paraffin-embedded Human tonsil using VCAM1 antibody. High-pressure and temperature Sodium Citrate pH 6.0 was used for antigen retrieval.

Immunofluorescence



Immunofluorescence analysis of VCAM1 in K562 using VCAM1 antibody.