

## CDK6 Rabbit mAb

## 产品信息

产品名称	产品编号	规格
CDK6 Rabbit mAb	31421ES50	50 $\mu$ L
	31421ES60	100 $\mu$ L

## 产品简介

The cyclin-dependent kinases form complexes with their cyclin partners and with CDK inhibitors. CDK6 and CDK4 associate with the D-type cyclins and target the retinoblastoma protein, allowing passage through the G1/S phase restriction point.

## 产品性质

别名	CDK 6; Cell division protein kinase 6; Crk 2; Cyclin dependent kinase 6; p40; PLSTIRE; STQTL11
SwissProt ID	Q00534
基因 ID	1021
免疫原	A synthetic peptide of human Cdk6.
缓冲液	50mM Tris-Glycine(pH 7.4), 0.15M NaCl, 40% Glycerol, 0.01% Sodium azide and 0.05% BSA.
分子量	Calculated MW: 37 kDa; Observed MW: 37 kDa.
克隆类型	Monoclonal Antibody
亚型	IgG
宿主	Rabbit
物种反应	Human
推荐应用	WB, ICC/IF
纯化方式	Affinity Purified

## 应用

稀释比 WB:1/500-1/1000; IF:1/50-1/200

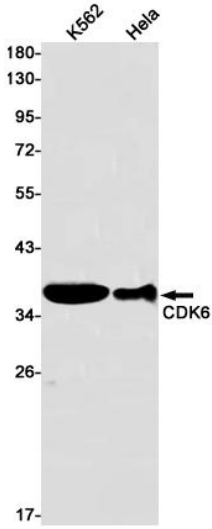
## 储存条件

-25~-15°C保存

## 注意事项

1. 避免反复冻融。
2. 本产品仅作科研用途。
3. 为了您的安全和健康，请穿实验服并佩戴一次性手套操作。

## Western blot



Western blot analysis of CDK6 in K562, HeLa lysates using CDK6 antibody.