

E2F1 Rabbit mAb

产品信息

产品名称	产品编号	规格
E2F1 Rabbit mAb	31420ES50	50 μ L
	31420ES60	100 μ L

产品简介

The protein encoded by this gene is a member of the E2F family of transcription factors. The E2F family plays a crucial role in the control of cell cycle and action of tumor suppressor proteins and is also a target of the transforming proteins of small DNA tumor viruses.

产品性质

别名	E2F1; RBBP3; Transcription factor E2F1; E2F-1; PBR3; Retinoblastoma-associated protein 1; RBAP-1; Retinoblastoma-binding protein 3; RBBP-3; pRB-binding protein E2F-1
SwissProt ID	Q01094
基因 ID	1869
免疫原	A synthetic peptide of human E2F1.
缓冲液	50mM Tris-Glycine(pH 7.4), 0.15M NaCl, 40% Glycerol, 0.01% Sodium azide and 0.05% BSA.
分子量	Calculated MW: 47 kDa; Observed MW: 70 kDa.
克隆类型	Monoclonal Antibody
亚型	IgG
宿主	Rabbit
物种反应	Human, Mouse, Rat
推荐应用	WB, IHC-F, IHC-P, ICC/IF, IP
纯化方式	Affinity Purified

应用

稀释比 WB:1/500-1/1000; IHC:1/50-1/100; IF:1/50-1/200; IP:1/20

储存条件

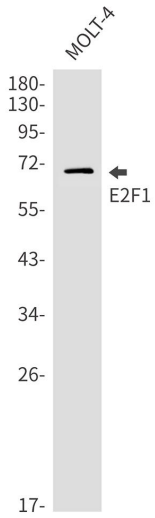
-25~-15°C保存

注意事项

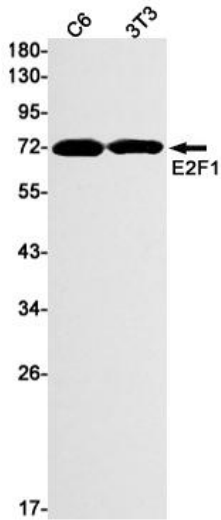
1. 避免反复冻融。
2. 本产品仅作科研用途。
3. 为了您的安全和健康，请穿实验服并佩戴一次性手套操作。

产品数据

Western blot

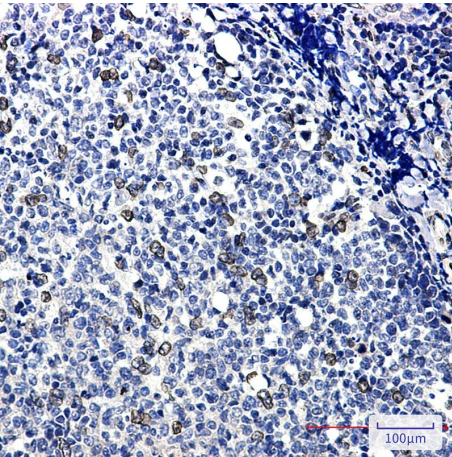


Western blot analysis of E2F1 in MOLT4 lysates using E2F1 antibody.



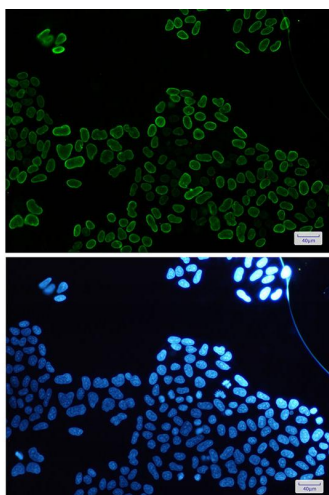
Western blot analysis of E2F1 in C6, 3T3 lysates using E2F1 antibody.

Immunohistochemistry



Immunohistochemistry analysis of paraffin-embedded Human tonsil using E2F1 antibody. High-pressure and temperature Sodium Citrate pH 6.0 was used for antigen retrieval.

Immunocytochemistry



Immunocytochemistry analysis of E2F1(green) in HeLa using E2F1 antibody, and DAPI(blue).