

## Ubiquitin K48 Rabbit mAb

### 产品信息

产品名称	产品编号	规格
Ubiquitin K48 Rabbit mAb	31418ES50	50 $\mu$ L
	31418ES60	100 $\mu$ L

### 产品简介

Plays an important role in the ubiquitin-proteasome pathway. Ubiquitin can be covalently linked to many cellular proteins by the ubiquitination process, which targets proteins for degradation by the 26S proteasome. Three components are involved in the target protein-ubiquitin conjugation process. Ubiquitin is first activated by forming a thiolester complex with the activation component E1; the activated ubiquitin is subsequently transferred to the ubiquitin-carrier protein E2, then from E2 to ubiquitin ligase E3 for final delivery to the epsilon-NH<sub>2</sub> of the target protein lysine residue.

### 产品性质

别名	FLJ25987; MGC8385; ubiquitin B; Ubiquitin; UBCEP1; UBCEP2; RPS27A
SwissProt ID	P0CG47
基因 ID	7314
免疫原	A synthetic peptide of human K-48 Linkage Specific Ubiquitin.
缓冲液	50mM Tris-Glycine(pH 7.4), 0.15M NaCl, 40% Glycerol, 0.01% Sodium azide and 0.05% BSA.
分子量	Refer to figures.
克隆类型	Monoclonal Antibody
亚型	IgG
宿主	Rabbit
物种反应	Human, Mouse, Rat
推荐应用	WB, IHC-F, IHC-P, ICC/IF
纯化方式	Affinity Purified

### 应用

稀释比 WB:1/500-1/1000; IHC:1/50-1/100; IF: 1/50-1/200

### 储存条件

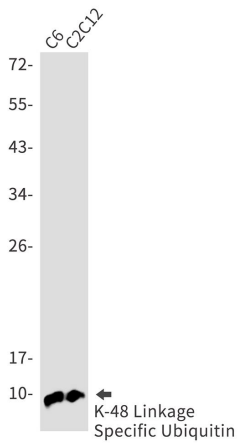
-25~-15°C保存

## 注意事项

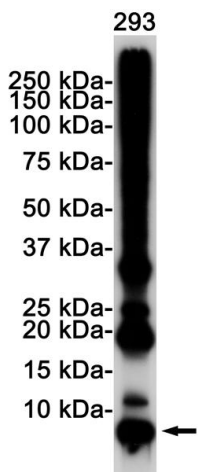
1. 避免反复冻融。
2. 本产品仅作科研用途。
3. 为了您的安全和健康，请穿实验服并佩戴一次性手套操作。

## 产品数据

### Western blot

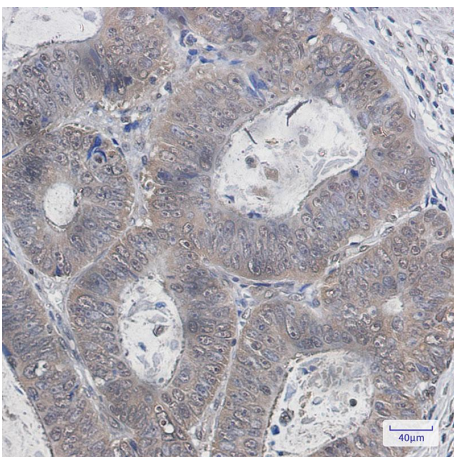


Western blot analysis of K48 Linkage Specific Ubiquitin in C6, C2C12 lysates using Ubiquitin K48 antibody.



Western blot analysis of K48 Linkage Specific Ubiquitin in 293 lysates using K48 Linkage Specific Ubiquitin antibody.

### Immunohistochemistry



Immunohistochemistry analysis of paraffin-embedded Human colon cancer using K48 Linkage Specific Ubiquitin antibody. High-pressure and temperature Sodium Citrate pH 6.0 was used for antigen retrieval.