

## MEK1/2 Rabbit mAb

### 产品信息

产品名称	产品编号	规格
MEK1/2 Rabbit mAb	31417ES50	50 $\mu$ L
	31417ES60	100 $\mu$ L

### 产品简介

Dual specificity protein kinase which acts as an essential component of the MAP kinase signal transduction pathway. Binding of extracellular ligands such as growth factors, cytokines and hormones to their cell-surface receptors activates RAS and this initiates RAF1 activation. RAF1 then further activates the dual-specificity protein kinases MAP2K1/MEK1 and MAP2K2/MEK2.

### 产品性质

别名	MAP2K1; MEK1; PRKMK1; Dual specificity mitogen-activated protein kinase kinase 1; MAP kinase kinase 1; MAPKK 1; MKK1; ERK activator kinase 1; MAPK/ERK kinase 1; MEK 1; MAP2K2; MEK2; MKK2; PRKMK2; Dual specificity mitogen-activated protein k
SwissProt ID	Q02750/P36507
基因 ID	5604/5605
免疫原	Recombinant protein of human MEK1/2.
缓冲液	50mM Tris-Glycine(pH 7.4), 0.15M NaCl, 40% Glycerol, 0.01% Sodium azide and 0.05% BSA.
分子量	Calculated MW: 43,44 kDa; Observed MW: 43,44 kDa.
克隆类型	Monoclonal Antibody
亚型	IgG
宿主	Rabbit
物种反应	Human, Mouse, Rat
推荐应用	WB, IHC-F, IHC-P, ICC/IF, IP
纯化方式	Affinity Purified

### 应用

稀释比 WB:1/500-1/1000; IHC:1/50-1/100; IF: 1/50-1/200; IP:1/20

### 储存条件

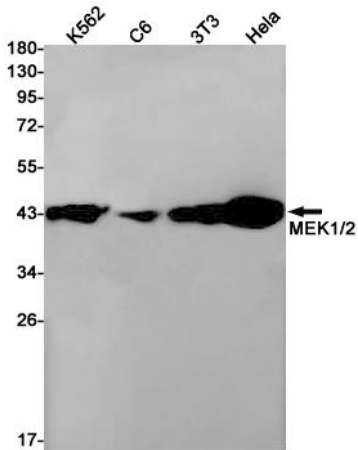
-25~-15°C保存

## 注意事项

1. 避免反复冻融。
2. 本产品仅作科研用途。
3. 为了您的安全和健康，请穿实验服并佩戴一次性手套操作。

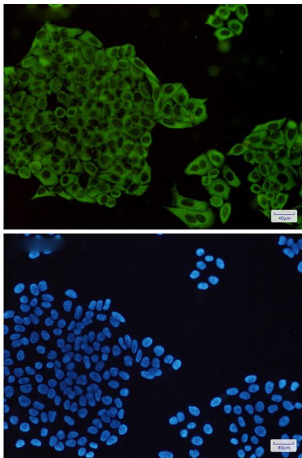
## 产品数据

### Western blot



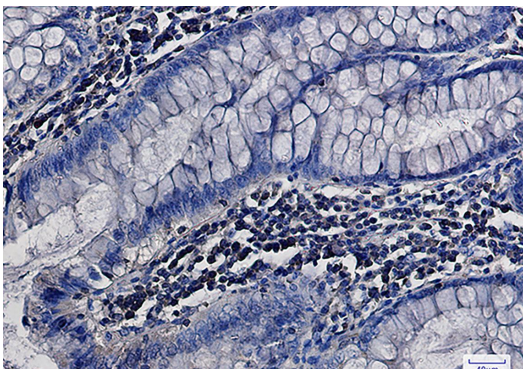
Western blot analysis of MEK1/2 in K562, C6, 3T3, HeLa lysates using MEK1/2 antibody.

### Immunocytochemistry



Immunocytochemistry analysis of MEK1/2(green) in HeLa using MEK1/2 antibody, and DAPI(blue).

### Immunohistochemistry



Immunohistochemistry analysis of paraffin-embedded Human colon cancer using MEK1/2 antibody. High-pressure and temperature Sodium Citrate pH 6.0 was used for antigen retrieval.