

Glucose Transporter GLUT4 Rabbit pAb

产品信息

产品名称	产品编号	规格
Glucose Transporter GLUT4 Rabbit pAb	31405ES50	50 μ L
	31405ES60	100 μ L

产品简介

This gene is a member of the solute carrier family 2 (facilitated glucose transporter) family and encodes a protein that functions as an insulin-regulated facilitative glucose transporter. In the absence of insulin, this integral membrane protein is sequestered within the cells of muscle and adipose tissue. Within minutes of insulin stimulation, the protein moves to the cell surface and begins to transport glucose across the cell membrane. Mutations in this gene have been associated with noninsulin-dependent diabetes mellitus (NIDDM).

产品性质

别名	SLC2A4; GLUT4; Solute carrier family 2; facilitated glucose transporter member 4; Glucose transporter type 4; insulin-responsive; GLUT-4
SwissProt ID	P14672
基因 ID	6517
免疫原	The antiserum was produced against synthesized peptide derived from the N-terminal region of human SLC2A4.
缓冲液	Liquid in PBS containing 50% glycerol, 0.5% BSA and 0.02% sodium azide, pH 7.3.
分子量	Calculated MW: 55 kDa; Observed MW: 55 kDa
克隆类型	Polyclonal Antibody
宿主	Rabbit
物种反应	Human, Mouse, Rat
推荐应用	WB, IHC-P, ELISA
纯化方式	Affinity Purified

应用

稀释比 WB:1/500-1/1000; IHC:1/50-1/100; ELISA:1/10000

储存条件

-25~-15°C保存

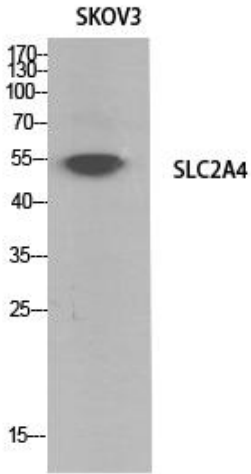
注意事项

1. 避免反复冻融。
2. 本产品仅作科研用途。

3. 为了您的安全和健康，请穿实验服并佩戴一次性手套操作。

产品数据

Western blot



Western blot analysis of Glucose Transporter GLUT4 in SKOV-3 lysates using Glucose Transporter GLUT4 antibody.