

Estrogen Receptor alpha Rabbit mAb

产品信息

产品名称	产品编号	规格
Estrogen Receptor alpha Rabbit mAb	31402ES50	50 μ L
	31402ES60	100 μ L

产品简介

ER (estrogen receptor 1) a member of the steroid receptor superfamily, contains highly conserved DNA binding (DBD) and ligand binding domains (LBD). Through its estrogen-independent and estrogen-dependent activation domains (AF-1 and AF-2, respectively), ER regulates transcription by recruiting coactivator proteins and interacting with general transcriptional machinery. Phosphorylation provides an important mechanism to regulate ER activity. ER is phosphorylated on multiple sites.

产品性质

别名	ESR1; Era; Eralpha; Estrogen receptor; Estradiol receptor; ER-alpha; Estrogen receptor 1; NR3A1; ER; ESR; ESRA; Estrogen receptor alpha
SwissProt ID	P03372
基因 ID	2099
免疫原	A synthetic peptide of human Estrogen Receptor alpha.
缓冲液	50mM Tris-Glycine(pH 7.4), 0.15M NaCl, 40% Glycerol, 0.01% Sodium azide and 0.05% BSA.
分子量	Calculated MW: 66 kDa; Observed MW: 66 kDa
克隆类型	Monoclonal Antibody
宿主	Rabbit
物种反应	Human
推荐应用	WB, IHC-F, IHC-P, ICC/IF, IP, ChIP
纯化方式	Affinity Purified

应用

稀释比 WB:1/500-1/1000; IHC:1/50-1/100; IF:1/50-1/200; IP:1/20;

储存条件

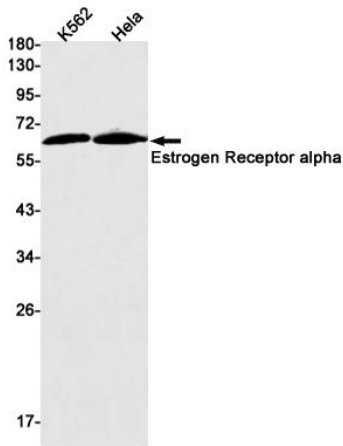
-25~-15°C保存

注意事项

1. 避免反复冻融。
2. 本产品仅作科研用途。
3. 为了您的安全和健康，请穿实验服并佩戴一次性手套操作。

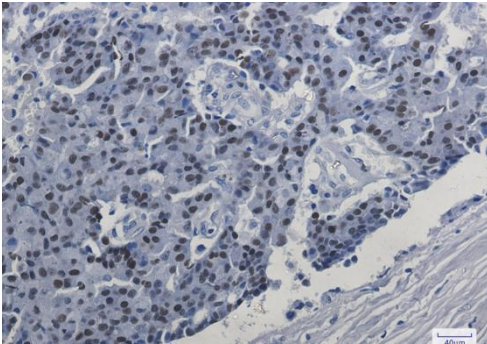
产品数据

Western blot



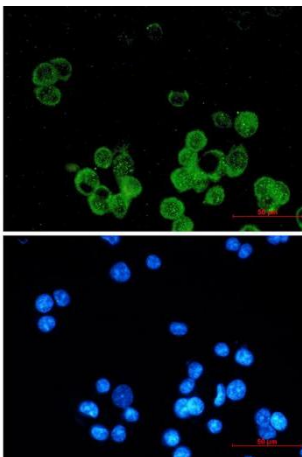
Western blot analysis of Estrogen Receptor alpha in K562, HeLa lysates using Estrogen Receptor alpha antibody.

Immunohistochemistry



Immunohistochemistry analysis of paraffin-embedded Human breast cancer using Estrogen Receptor alpha antibody. High-pressure and temperature Sodium Citrate pH 6.0 was used for antigen retrieval.

Immunohistochemistry



Immunocytochemistry analysis of Estrogen Receptor alpha (green) in MCF-7 using Estrogen Receptor alpha antibody, and DAPI (blue).