

Phospho-STAT1(Ser727) Rabbit mAb

产品信息

产品名称	产品编号	规格
Phospho-STAT1(Ser727) Rabbit mAb	31279ES50	50 μ L
	31279ES60	100 μ L

产品简介

The protein encoded by this gene is a member of the STAT protein family. In response to cytokines and growth factors, STAT family members are phosphorylated by the receptor associated kinases, and then form homo- or heterodimers that translocate to the cell nucleus where they act as transcription activators.

产品性质

别名	STAT1; Signal transducer and activator of transcription 1-alpha/beta; Transcription factor ISGF-3 components p91/p84
SwissProt ID	P42224
基因 ID	6772
免疫原	A synthetic phosphopeptide corresponding to residues surrounding Ser727 of human STAT1
缓冲液	50mM Tris-Glycine(pH 7.4), 0.15M NaCl, 40% Glycerol, 0.01% Sodium azide and 0.05% BSA
分子量	Calculated MW: 87 kDa; Observed MW: 87 kDa
克隆类型	Monoclonal Antibody
宿主	Rabbit
物种反应	Human, Mouse, Rat
推荐应用	WB, IHC-P
纯化方式	Affinity Purified

应用

稀释比 WB: 1/500-1/1000; IHC: 1/50-1/100

储存条件

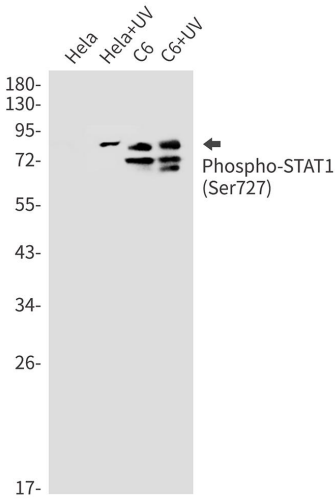
-25~-15°C保存

注意事项

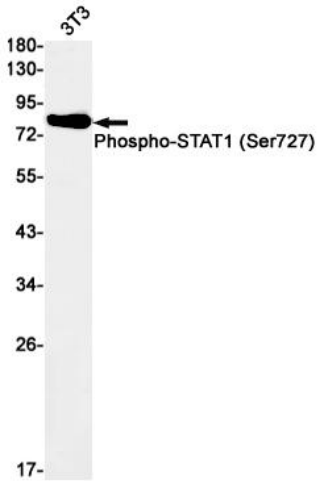
1. 避免反复冻融。
2. 本产品仅作科研用途。
2. 为了您的安全和健康，请穿实验服并佩戴一次性手套操作。

产品数据

Western blot



Western blot analysis of Phospho-STAT1(Ser727) in HeLa, HeLa+UV, C6, C6+UV lysates using Phospho-STAT1(Ser727) antibody.



Western blot analysis of Phospho-STAT1(Ser727) in 3T3 lysates using Phospho-STAT1(Ser727) antibody.