

Vinculin Rabbit mAb

产品信息

产品名称	产品编号	规格
Vinculin Rabbit mAb	31277ES50	50 μ L
	31277ES60	100 μ L

产品简介

Vinculin is a cytoskeletal protein that plays an important role in the regulation of focal adhesions and embryonic development. Three structural vinculin domains include an amino-terminal head, a short, flexible proline-rich region and a carboxy-terminal tail. In the inactive state, the head and tail domains of vinculin interact to form a closed confirmation. The open and active form of vinculin translocates to focal adhesions where it is thought to be involved in anchoring F-actin to the membrane and regulation of cell migration.

产品性质

别名	VCL; Vinculin; Metavinculin
SwissProt ID	P18206
基因 ID	7414
免疫原	Recombinant protein of human Vinculin
缓冲液	50mM Tris-Glycine(pH 7.4), 0.15M NaCl, 40% Glycerol, 0.01% Sodium azide and 0.05% BSA
分子量	Calculated MW: 124 kDa; Observed MW: 124 kDa
克隆类型	Monoclonal Antibody
宿主	Rabbit
物种反应	Human, Mouse, Rat
推荐应用	WB, IHC-P
纯化方式	Affinity Purified

应用

稀释比 WB: 1/500-1/1000; IHC: 1/50-1/100;

储存条件

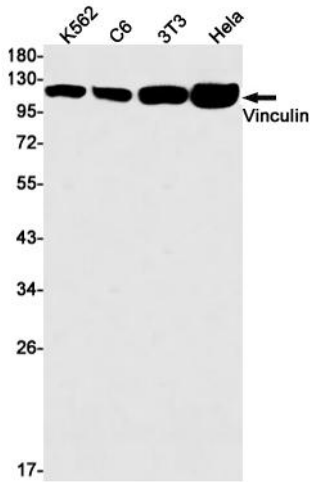
-25~-15°C保存

注意事项

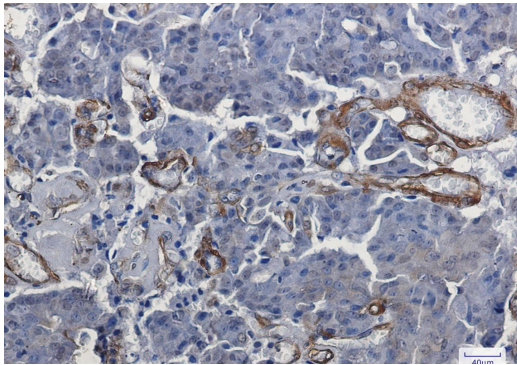
1. 避免反复冻融。
2. 本产品仅作科研用途。
2. 为了您的安全和健康，请穿实验服并佩戴一次性手套操作。

产品数据

Western blot



Western blot analysis of Vinculin in K562, C6, 3T3, HeLa lysates using Vinculin antibody.



Immunohistochemistry analysis of paraffin-embedded Human breast cancer using Vinculin antibody. High-pressure and temperature Sodium Citrate pH 6.0 was used for antigen retrieval.