

Human Serum Albumin Mouse mAb

产品信息

产品名称	产品编号	规格
Human Serum Albumin Mouse mAb	31273ES50	50 μ L
	31273ES60	100 μ L

产品简介

Albumin is a soluble, monomeric protein which comprises about one-half of the blood serum protein. Albumin functions primarily as a carrier protein for steroids, fatty acids, and thyroid hormones and plays a role in stabilizing extracellular fluid volume.

产品性质

别名	ALB; ALBU_HUMAN; Albumin (32 AA); Albumin (AA 34); Albumin; Analbuminemia; Bisalbuminemia; Cell growth inhibiting protein 42; DKFZp779N1935; Dysalbuminemic hyperthyroxinemia; Growth inhibiting protein 20; HSA; Hyperthyroxinemia dysalbuminemic; Serum albumin
SwissProt ID	P02768
基因 ID	213
免疫原	Purified Human serum albumin.
缓冲液	Liquid in PBS containing 50% glycerol, 0.5% BSA and 0.02% sodium azide, pH 7.3.
分子量	Calculated MW: 69 kDa; Observed MW: 69 kDa
克隆类型	Monoclonal Antibody
宿主	Mouse
物种反应	Human
推荐应用	WB, ELISA
纯化方式	Affinity Purified

应用

稀释比 WB: 1/500-1/1000; ELISA: 1/10000

储存条件

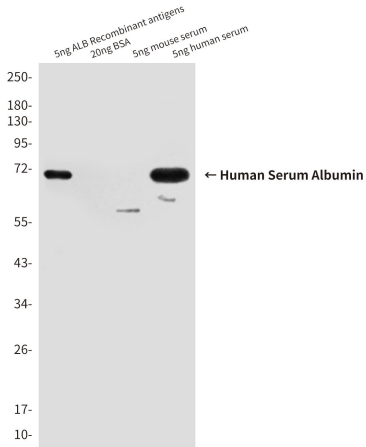
-25~-15°C保存

注意事项

1. 避免反复冻融。
2. 本产品仅作科研用途。
2. 为了您的安全和健康，请穿实验服并佩戴一次性手套操作。

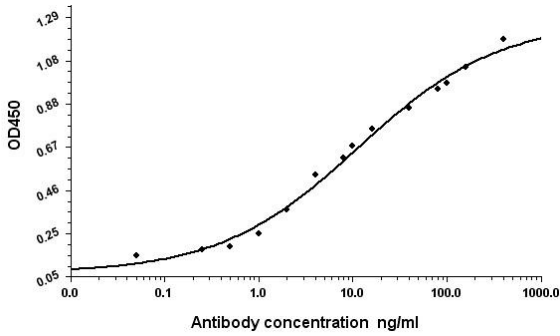
产品数据

Western blot

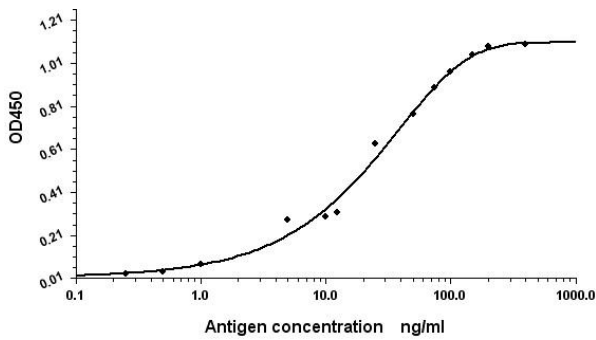


Western blot analysis of Human Serum Albumin in 0.5nl Human serum and 5ng ALB Rexombinant antigens lysates using Human Serum Albumin antibody.

ELISA



Indirect ELISA assay for Human Serum Albumin antibody. Antigen coating concentration:8ug/mL.



Standard Curve for Human Serum Albumin (Analyte: Human Serum Albumin protein); using Capture antibody mouse monoclonal to Human Serum Albumin at 8ug/mL and Detector antibody Rabbit polyclonal antiserum to Human Serum Albumin.