

Alkaline Phosphatase Rabbit pAb

产品信息

产品名称	产品编号	规格
Alkaline Phosphatase Rabbit pAb	31260ES50	50 μ L
	31260ES60	100 μ L

产品简介

There are at least four distinct but related alkaline phosphatases: intestinal, placental, placental-like, and liver/bone/kidney (tissue non-specific). The first three are located together on chromosome 2, while the tissue non-specific form is located on chromosome 1. The product of this gene is a membrane bound glycosylated enzyme that is not expressed in any particular tissue and is, therefore, referred to as the tissue-nonspecific form of the enzyme.

产品性质

别名	ALPL; Alkaline phosphatase; tissue-nonspecific isozyme; AP-TNAP; TNSALP; Alkaline phosphatase liver/bone/kidney isozyme
SwissProt ID	P05186
基因 ID	249
免疫原	A synthesized peptide derived from human Alkaline Phosphatase.
缓冲液	Rabbit IgG in phosphate buffered saline , pH 7.4, 150mM NaCl, 0.02% sodium azide and 50% glycerol.
分子量	Calculated MW: 57 kDa; Observed MW:75 kDa
克隆类型	Polyclonal Antibody
宿主	Rabbit
物种反应	Human,Mouse,Rat
推荐应用	WB,IHC-P,ICC/IF,IP,FC
纯化方式	Affinity Chromatography

应用

稀释比 WB: 1/500-1/1000; IHC: 1/50-1/100; IF: 1/50-1/200; IP: 1/20; FC: 1/50-1/100;

储存条件

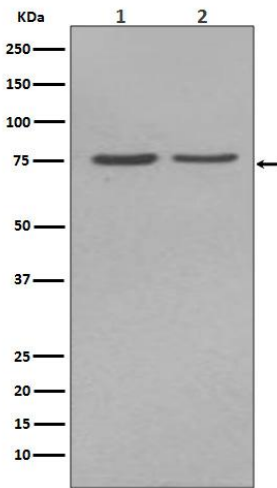
-25~-15°C保存

注意事项

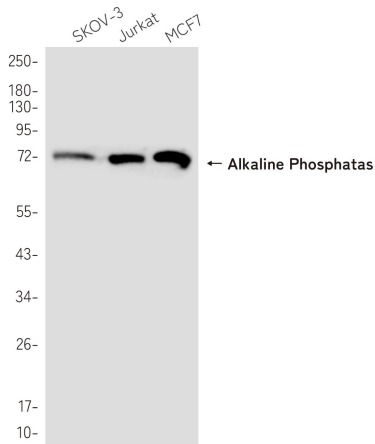
1. 避免反复冻融。
2. 本产品仅作科研用途。
2. 为了您的安全和健康，请穿实验服并佩戴一次性手套操作。

产品数据

Western blot

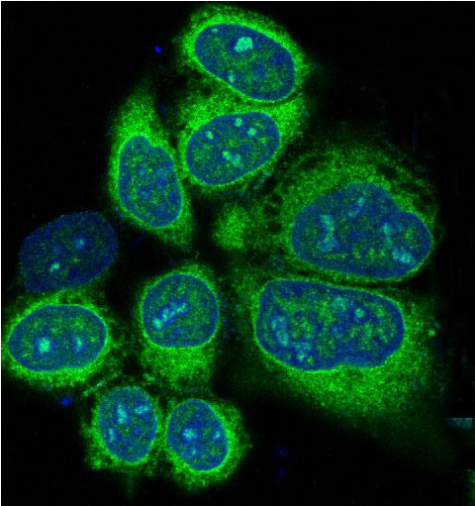


Western blot analysis of Alkaline Phosphatase in (1)HepG2 lysates; (2)JAR lysates using Alkaline Phosphatase antibody.



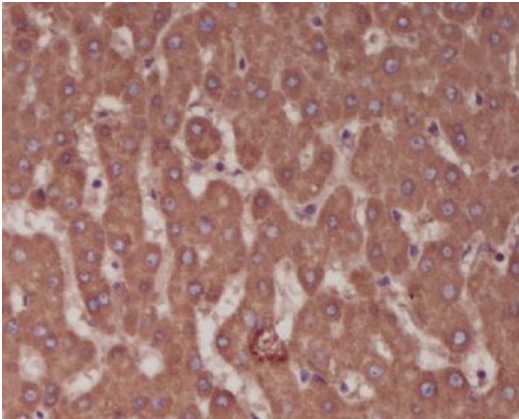
Western blot analysis of Alkaline Phosphatase in SKOV-3, Jurkat and MCF-7 lysates using Alkaline Phosphatase antibody.

Immunofluorescence



Immunofluorescence analysis of Alkaline Phosphatase in HeLa using Alkaline Phosphatase antibody.

Immunohistochemistry



Immunohistochemistry analysis of paraffin-embedded Human liver using Alkaline Phosphatase antibody. High-pressure and temperature Sodium Citrate pH 6.0 was used for antigen retrieval.