

Mitofusin 2 Rabbit pAb

产品信息

产品名称	产品编号	规格
Mitofusin 2 Rabbit pAb	31256ES50	50 μ L
	31256ES60	100 μ L

产品简介

Plays an important role in the regulation of vascular smooth muscle cell proliferation. Involved in the clearance of damaged mitochondria via selective autophagy (mitophagy). Is required for PARK2 recruitment to dysfunctional mitochondria.

产品性质

别名	HSG; MARF; CMT2A; CPRP1; CMT2A2; HMSN6A; CMT2A2A; CMT2A2B
SwissProt ID	O95140
基因 ID	9927
免疫原	The antiserum was produced against synthesized peptide derived from human Mfn2. AA range:354-403
缓冲液	Liquid in PBS containing 50% glycerol, 0.5% BSA and 0.02% sodium azide, pH 7.3.
分子量	Calculated MW: 86 kDa; Observed MW: 86 kDa
克隆类型	Polyclonal Antibody
亚型	IgG
宿主	Rabbit
物种反应	Human,Mouse,Rat
推荐应用	WB,IHC-P,ELISA
纯化方式	Affinity Chromatography

应用

稀释比 WB: 1/500-1/1000; IHC:1/50-1/100; ELISA: 1/10000

储存条件

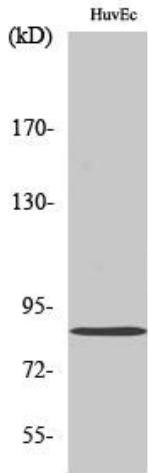
-25~-15°C保存

注意事项

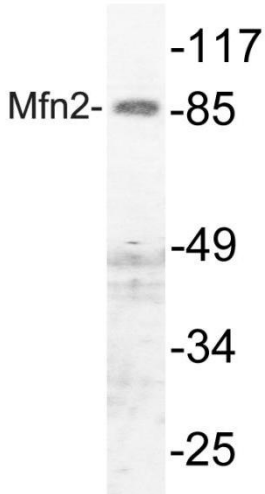
1. 避免反复冻融。
2. 本产品仅作科研用途。
2. 为了您的安全和健康, 请穿实验服并佩戴一次性手套操作。

产品数据

Western blot

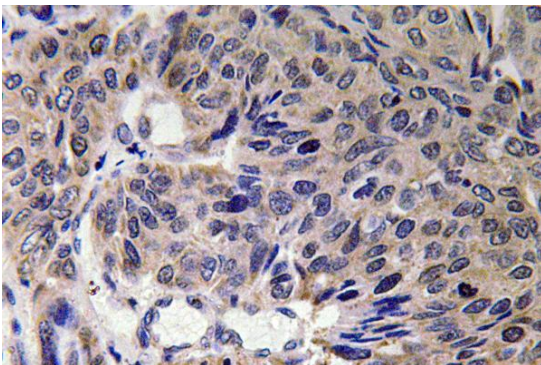


Western blot analysis of Mitofusin 2 in HuvEc lysates using Mitofusin 2 antibody.



Western blot analysis of Mitofusin 2 in HUVEC lysates using Mfn 2 antibody.

Immunohistochemistry



Immunohistochemistry analysis of paraffin-embedded Human lung carcinoma tissue using Mitofusin 2 antibody. High-pressure and temperature Sodium Citrate pH 6.0 was used for antigen retrieval.