

Smad2/3 Rabbit pAb

产品信息

产品名称	产品编号	规格
Smad2/3 Rabbit pAb	31253ES50	50 μ L
	31253ES60	100 μ L

产品简介

The protein encoded by this gene belongs to the SMAD, a family of proteins similar to the gene products of the Drosophila gene 'mothers against decapentaplegic' (Mad) and the C. elegans gene Sma. SMAD proteins are signal transducers and transcriptional modulators that mediate multiple signaling pathways.

产品性质

别名	SMAD2; MADH2; MADR2; Mothers against decapentaplegic homolog 2; MAD homolog 2; Mothers against DPP homolog 2; JV18-1; Mad-related protein 2; hMAD-2; SMAD family member 2; SMAD 2; Smad2; hSMAD2
SwissProt ID	Q15796
基因 ID	4087
免疫原	Recombinant protein of human Smad2.
缓冲液	50mM Tris-Glycine(pH 7.4), 0.15M NaCl, 40% Glycerol, 0.01% Sodium azide and 0.05% BSA
分子量	Calculated MW: 52 kDa; Observed MW: 52,60 kDa
克隆类型	Polyclonal Antibody
亚型	IgG
宿主	Rabbit
物种反应	Human,Mouse,Rat
推荐应用	WB,ICC/IF,FC,IP,ChIP
纯化方式	Affinity Purified

应用

稀释比 WB: 1/500-1/1000; IF: 1/50-1/200; IP: 1/20; FC:1/50-1/100; ChIP:1/20

储存条件

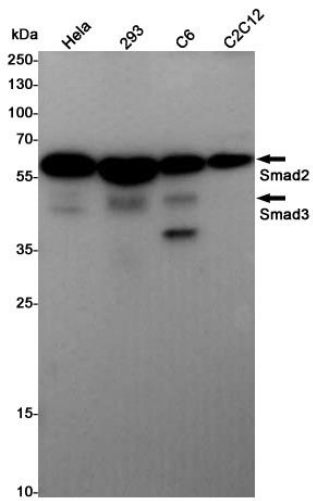
-25~-15°C保存

注意事项

1. 避免反复冻融。
2. 本产品仅作科研用途。
2. 为了您的安全和健康，请穿实验服并佩戴一次性手套操作。

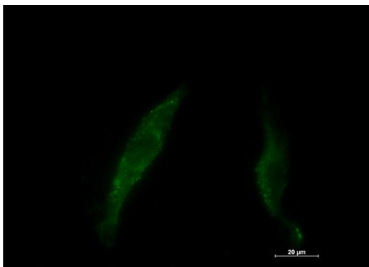
产品数据

Western blot



Western blot analysis of Smad2/3 in HeLa, 293, C6, C2C12 lysates using Smad2/3 antibody.

Immunocytochemistry



Immunocytochemistry analysis of Smad2/3(green) in HT-1080 using Smad2/3 antibody, and DAPI(blue).

