

Recombinant Human Beta Klotho Protein, His Tag

产品信息

产品名称	产品编号	规格
Recombinant Human Beta Klotho Protein, His Tag	94201ES25	25 µg
	94201ES60	100 µg
	94201ES76	500 µg
	94201ES80	1 mg

产品描述

Beta-klotho (KLB) is a coreceptor required for endocrine fibroblast growth factor (FGF) 15/19 and FGF21 signaling in the brain. Like Klotho, Klotho beta facilitates binding between FGF19 subfamily members and their receptors via formation of a ternary complex. The Klotho beta mediated interaction of human FGF19 with FGF Receptor 4 in the liver negatively regulates bile acid synthesis by controlling the secretion of two key bile acid synthase genes, cholesterol 7-alpha hydroxylase and sterol 12-alpha hydroxylase

产品性质

Synonyms	betaKlotho; beta-klotho; BKL; KLB; klotho beta like; Klotho beta; β-klotho; klotho β like; Klotho β
Uniprot No.	Q86Z14
Source	HEK293 Cells-derived Human Beta Klotho Protein, Met30-Thr983 with His tag at the C-terminal
Molecular Weight	Approximately 111.6 kDa. Due to glycosylation, the protein migrates to 115-130 kDa based on Tris-Bis PAGE result.
Physical Appearance	Sterile Filtered White lyophilized (freeze-dried) powder.
Purity	> 95% as determined by SDS-PAGE and HPLC
Endotoxin	< 1.0 EU per 1µg of the protein by the LAL method.
Formulation	Lyophilized from 0.22 µm filtered solution in PBS (pH 7.4). Normally 8% trehalose is added as protectant before lyophilization.
Reconstitution	Centrifuge tubes before opening. Reconstituting to a concentration more than 100 µg/mL is recommended (usually we use 1 mg/mL solution for lyophilization). Dissolve the lyophilized protein in distilled water.

运输与保存方法

The products are shipped with ice pack and can be stored at -20°C for 1 year.

2-7 days, 2 to 8 °C under sterile conditions after reconstitution.

3 months, -20 °C under sterile conditions after reconstitution.

Recommend to aliquot the protein into smaller quantities for optimal storage. Please avoid freeze-thaw cycles.

注意事项

1. For your safety and health, please wear lab coats and disposable gloves for operation.
2. For research use only!

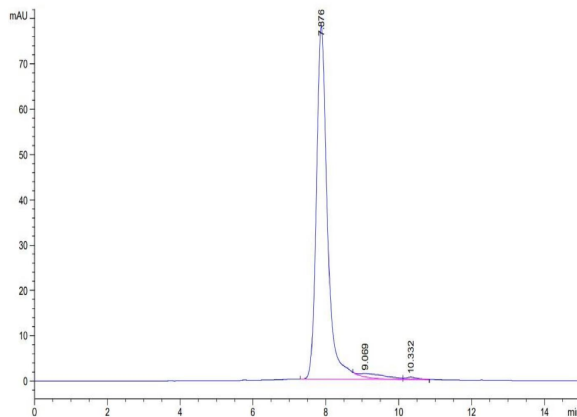
产品数据

Tris-Bis PAGE



Human Beta Klotho on Tris-Bis PAGE under reduced conditions. The purity is greater than 95%.

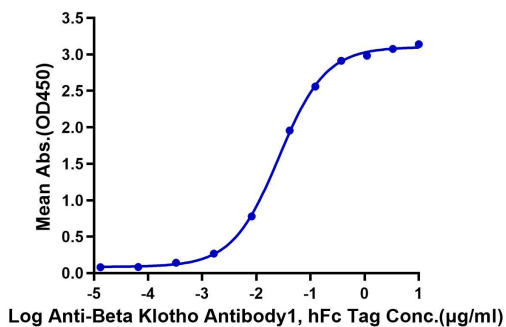
SEC-HPLC



The purity of Human Beta Klotho is greater than 95% as determined by SEC-HPLC.

ELISA Data

Human Beta Klotho, His Tag ELISA
0.2 μ g Human Beta Klotho, His Tag Per Well

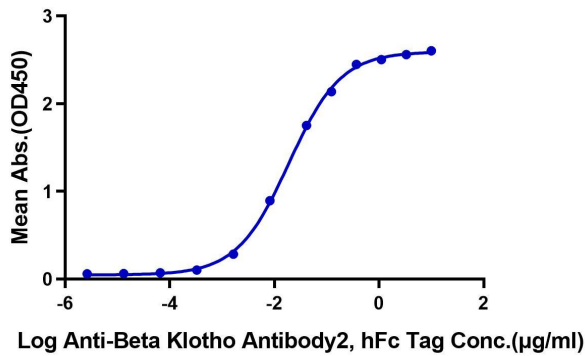


Immobilized Human Beta Klotho at 2 μ g/ml (100 μ l/Well). Dose response curve for Anti-Beta Klotho Antibody1, hFc Tag with the EC₅₀ of 24.1ng/ml determined by ELISA

ELISA Data

Human Beta Klotho, His Tag ELISA

0.2 μ g Human Beta Klotho, His Tag Per Well

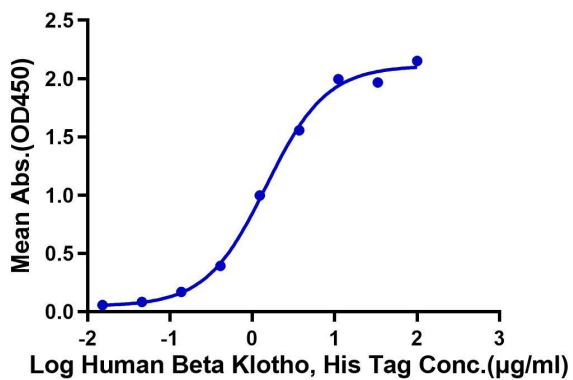


Immobilized Human Beta Klotho at 2 μ g/ml (100 μ l/Well). Dose response curve for Anti-Beta Klotho Antibody2, hFc Tag with the EC₅₀ of 34.6ng/ml determined by ELISA

ELISA Data

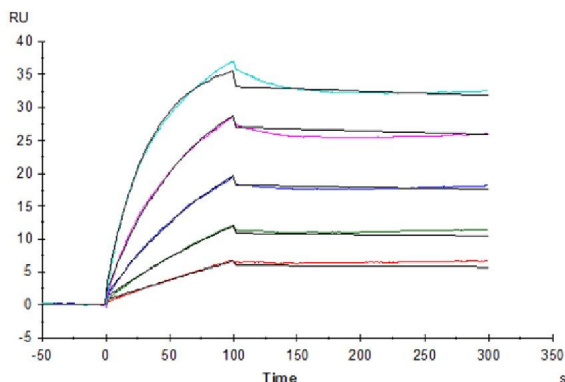
Human Beta Klotho, His Tag ELISA

0.2 μ g Human FGF21, mFc Tag Per Well



Immobilized Human FGF21, mFc Tag at 2 μ g/ml (100 μ l/Well) on the plate. Dose response curve for Human Beta Klotho, His Tag with the EC₅₀ of 1.48 μ g/ml determined by ELISA.

SPR Data



Human Beta Klotho, His Tag captured on CM5 Chip via anti-His antibody can bind Human FGF21, mFc Tag with an affinity constant of 0.54nM as determined in SPR assay.