

Recombinant Human CXCL16 Protein

产品信息

产品名称	产品编号	规格
Recombinant Human CXCL16 Protein	91012ES10	10 µg
	91012ES60	100 µg
	91012ES76	500 µg

产品简介

CXC chemokine ligand 16 (CXCL16) is a type I membrane protein containing a non-ELR motif-containing CXC chemokine domain in its extracellular region. Functional CXCL16 can be shed from the cell surface as an approximately 35 kDa soluble protein.

性能参数

Synonyms	CXCLG16, SR-PSOX, SRPSOX
Uniprot No.	Q9H2A7-1
Source	Recombinant Human CXCL16 Protein is expressed from E.coli Cells with tag free. It contains Asn 30 - Thr 205.
Molecular Weight	The protein has a predicted MW of 19.5kDa.
Purity	> 95% as determined by SDS-PAGE.
Endotoxin	<1 EU per 1µg of the protein by the LAL method.
Formulation	Lyophilized from 0.22 µm filtered solution in PBS (pH 7.4).
Reconstitution	Centrifuge tubes before opening. The concentration of protein solution used for lyophilization is generally 1mg/mL. Dissolve lyophilized protein with sterile water to ensure the concentration is greater than 100 ug/mL.

储存条件

The product should be stored at -25~-15°C for 1 year from date of receipt.

2-7 days, 2~8 °C under sterile conditions after reconstitution.

3 months, -25~-15°C under sterile conditions after reconstitution.

Recommend to aliquot the protein into smaller quantities when first used and avoid repeated freeze-thaw cycles.

注意事项

1.Please operate with lab coats and disposable gloves,for your safety.

2.This product is for research use only.

产品数据

SDS-PAGE

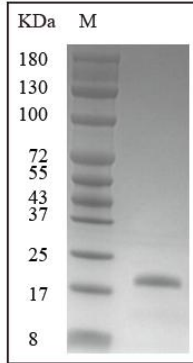


Figure 1. Human CXCL16 Protein on SDS-PAGE under reduced condition. The purity is greater than 95%.

Bioactivity-Cell based assay

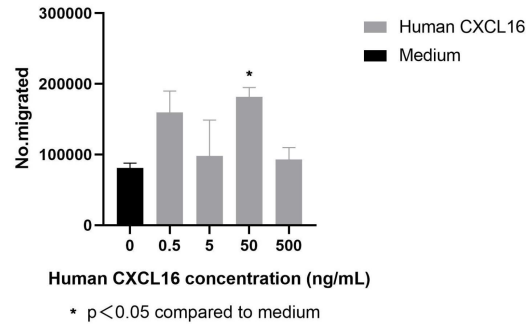


Figure 2. Determined by its ability to chemoattract human peripheral blood monocytes using a concentration range of 0.5-500.0 ng/ml.