

Recombinant Human IL-12 Protein, His tag

产品信息

产品名称	产品编号	规格
Recombinant Human IL-12 Protein, His tag	90200ES10	10 µg
	90200ES60	100 µg
	90200ES76	500 µg

产品简介

IL-12 is a cytokine protein that plays a key role in the immune system's response to infection and cancer. It stimulates the activation and proliferation of T cells and natural killer cells, and also stimulates the production of interferon-gamma, an important immune signaling molecule. IL-12 has been studied for its potential use in cancer immunotherapy and vaccine development.

性能参数

Synonyms	Interleukin-12, IL-12, NKSF, CTL Maturation Factor (TCMF), Cytotoxic Lymphocyte Maturation Factor (CLMF), TSF
Uniprot No.	IL-12A:P29459-1; IL-12B:P29460-1
Source	Recombinant Human IL-12 Protein is expressed from HEK293 Cells with His tag at the N-terminal. IL-12A contains Arg23-Ser219. IL-12B contains Ile23-Ser328.
Molecular Weight	The protein has a predicted MW of 24.5 kDa(IL-12A)&36.6kDa(IL-12B). And it migrates as 35-40 kDa(IL-12A)&40-55kDa(IL-12B) under reducing (R) condition (SDS-PAGE) due to glycosylation.
Concentration	1mg/ml.
Purity	> 95% as determined by SDS-PAGE.
Endotoxin	<1 EU per 1µg of the protein by the LAL method.
Formulation	Supplied as sterile PBS, pH 7.4.

储存条件

The product should be stored at -25~-15°C for 1 year from date of receipt.

2-7 days, 2~8 °C under sterile conditions after reconstitution.

3 months, -25~-15°C under sterile conditions after reconstitution.

Recommend to aliquot the protein into smaller quantities when first used and avoid repeated freeze-thaw cycles.

注意事项

1. Please operate with lab coats and disposable gloves, for your safety.
2. This product is for research use only.

产品数据

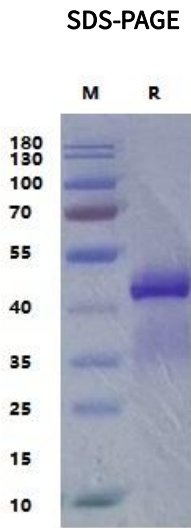


Figure 1. Human IL-12 on SDS-PAGE under reduced condition. The purity is greater than 95%.

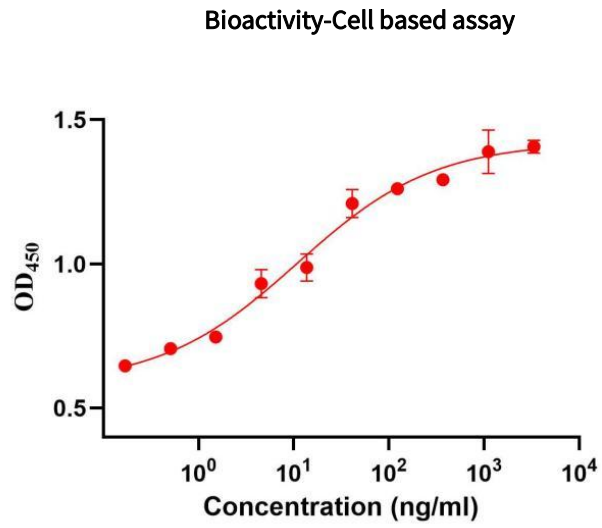


Figure 2. The ED₅₀ as determined by a cell proliferation assay using PHA-activated human peripheral blood lymphocytes (PBL) is less than 20 ng/mL, corresponding to a specific activity of $>5 \times 10^4$ IU/mg.