

Recombinant Human Leptin Protein

产品信息

产品名称	产品编号	规格
Recombinant Human Leptin Protein	92542ES60	100 µg
	92542ES70	200 µg
	92542ES80	1 mg

产品简介

Leptin is encoded by the obese gene. It modulates multiple functions including energy homeostasis, thermoregulation, bone metabolism, endocrine, and pro-inflammatory immune responses. As a signal molecule with growth factor characteristics, leptin can stimulate osteoblastic cells and inhibit osteoclast formation and activity, thus promoting osteogenesis.

性能参数

Synonyms	Obese Protein, Obesity Factor
Accession	P41159
Source	E.coli-derived Human Leptin, Val22-Cys167.
Molecular Weight	Approximately 16.0 kDa.
Purity	> 95% by SDS-PAGE.
Endotoxin	< 1.0 EU per 1µg of the protein by the LAL method.
Formulation	Lyophilized from a 0.2 µm filtered concentrated solution in 1×PBS, pH 7.4, 1%BSA.
Reconstitution	1.We recommend that this vial be briefly centrifuged prior to opening to bring the contents to the bottom. 2.Reconstitute in sterile PBS, pH 7.4, with 0.1% BSA to a concentration of 0.1-1.0 mg/mL. 3.Stock solutions should be apportioned into working aliquots and stored at ≤-20 °C. 4.Further dilutions should be made in PBS or sterile distilled water .

储存条件

The product should be stored at -25~-15°C for 1 year.

1 month, 2~8 °C under sterile conditions after reconstitution.

3 months, -25~-15°C °C under sterile conditions after reconstitution.

Recommend to aliquot the protein into smaller quantities when first used and avoid repeated freeze-thaw cycles.

注意事项

1. Please operate with lab coats and disposable gloves, for your safety.
2. This product is for research use only.

产品数据

SDS-PAGE

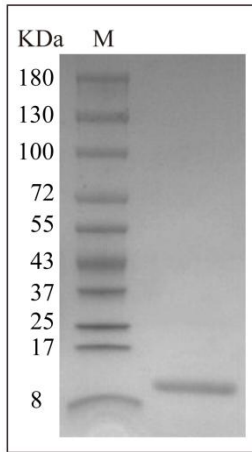


Figure 1. Human Leptin Protein on SDS PAGE under reduced condition. The purity is greater than 95%.

ELISA Data

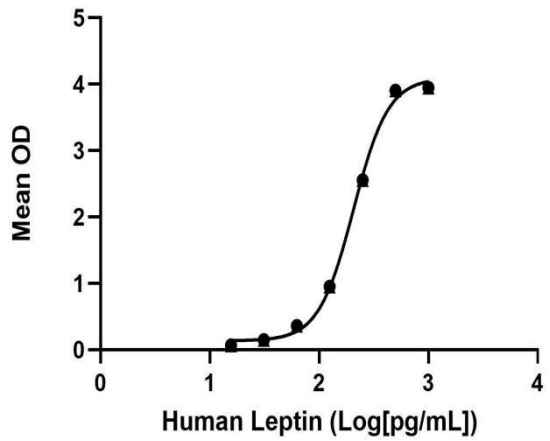


Figure 2. Immobilized Human Leptin Antibody at 3 $\mu\text{g/mL}$ (100 $\mu\text{L/well}$) can bind Human Leptin, the EC_{50} of Human Leptin is 174-246 pg/mL .