

Recombinant Human LTBR Protein, hFc Tag

产品信息

产品名称	产品编号	规格
Recombinant Human LTBR Protein, hFc Tag	94388ES25	25 µg
	94388ES60	100 µg
	94388ES76	500 µg

产品简介

Lymphotoxin beta receptor (LTBR), previously called TNF RIII or TNF R-related protein (TNF Rrp), is a type I transmembrane glycoprotein within the TNF receptor superfamily, designated TNFRSF3. Components of LTBR-associated signaling complexes, including TRAF2, TRAF3, NIK, IKK1, and IKK2 have been shown to participate in the coupling of LTBR to NFkappaB.

性能参数

Synonyms	TNFCR; TNFR3; TNFRSF3; LTBR; CD18; TNFR2-RP; TNFR-RP; LT-BETA-R; TNF-R-III; D12S370; LT-β-R
Uniprot No.	P36941-1
Source	Recombinant Human LTBR Protein is expressed from HEK293 cells with hFc tag at the C-terminal. It contains Gln31-Met227.
Molecular Weight	The protein has a predicted MW of 48.5 kDa. Due to glycosylation, the protein migrates to 60-70 kDa based on SDS-PAGE result.
Purity	> 95% as determined by SDS-PAGE and HPLC.
Endotoxin	<1.0 EU per 1µg of the protein by the LAL method.
Formulation	Lyophilized from 0.22 µm filtered solution in PBS (pH 7.4). Normally 8% trehalose is added as protectant before lyophilization.
Reconstitution	Centrifuge tubes before opening. Dissolve lyophilized protein with sterile water to ensure the concentration is greater than 100 µg/mL.

储存条件

The product should be stored at -25~-15°C for 1 year from date of receipt.

2-7 days, 2~8 °C under sterile conditions after reconstitution.

3 months, -25~-15°C under sterile conditions after reconstitution.

Recommend to aliquot the protein into smaller quantities when first used and avoid repeated freeze-thaw cycles.

注意事项

1. Please operate with lab coats and disposable gloves, for your safety.
2. This product is for research use only.

产品数据

SDS-PAGE

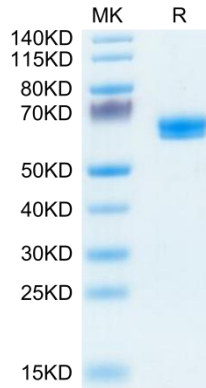


Figure 1. Human LTBR on SDS-PAGE under reduced condition. The purity is greater than 95%.

SEC-HPLC

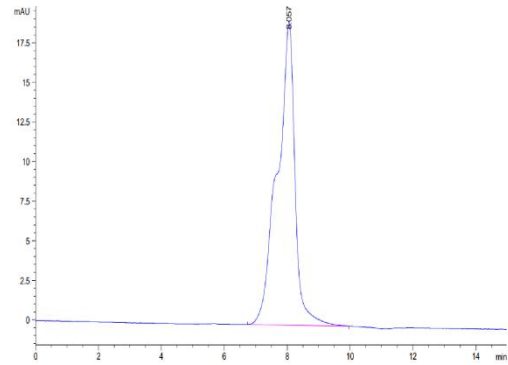


Figure 2. The purity of Human LTBR is greater than 95% as determined by SEC-HPLC.

ELISA

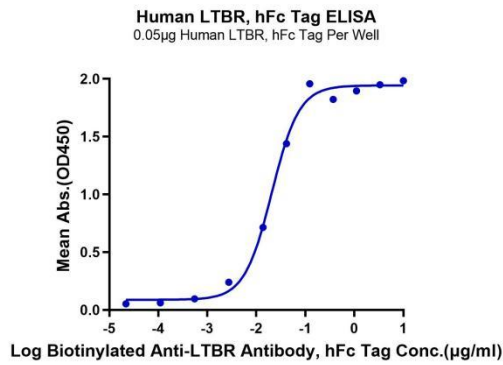


Figure 3. Immobilized Human LTBR, hFc Tag at 0.5 μ g/mL (100 μ L/Well) on the plate. Dose response curve for Biotinylated Anti-LTBR Antibody, hFc Tag with the EC_{50} of 20.7 ng/mL determined by ELISA (QC Test).

ELISA

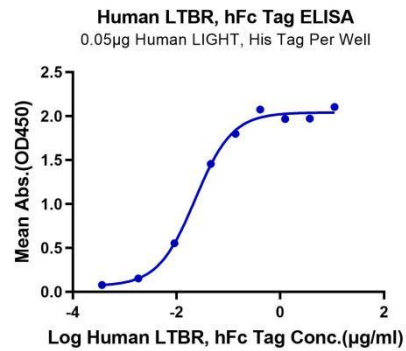


Figure 4. Immobilized Human LTBR, hFc Tag at 0.5 μ g/mL (100 μ L/Well) on the plate. Dose response curve for Human LTBR Antibody, hFc Tag with the EC_{50} of 22.9 ng/mL determined by ELISA.