

Recombinant Human HGFR/c-MET Protein,hFc Tag

产品信息

产品名称	产品编号	规格
Recombinant Human HGFR/c-MET Protein,hFc Tag	94420ES60	100 µg
	94420ES76	500 µg

产品简介

HGF R is a glycosylated receptor tyrosine kinase that plays a central role in epithelial morphogenesis and cancer development.

性能参数

Synonyms	MET; oncogene MET; HGF R; HGF/SF receptor; AUTS9; cMET; Met (c-Met); RCCP2; SF receptor
Uniprot No.	P08581-1
Source	Recombinant Human HGF R/c-MET Protein is expressed from Expi293 with hFc tag at the C-terminal. It contains Glu25-Thr932.
Molecular Weight	The mature form of HGF R is a heterodimer which can be cleaved into α and β chain. The protein has a predicted MW of 32.5 kDa (α chain) and 95.9 kDa (β chain Fc chimera). Due to glycosylation, the protein migrates to 45-55 kDa and 100-120 kDa based on Tris-Bis PAGE result.
Purity	> 95% as determined by SDS-PAGE .
Endotoxin	<1.0 EU per 1µg of the protein by the LAL method.
Formulation	Lyophilized from 0.22µm filtered solution in PBS (pH 7.4). Normally 8% trehalose is added as protectant before lyophilization.
Reconstitution	Centrifuge tubes before opening. Reconstituting to a concentration more than 100 µg/ml is recommended. Dissolve the lyophilized protein in distilled water.

储存条件

The product should be stored at -25~-15°C for 1 year from date of receipt.

2-7 days, 2~8 °C under sterile conditions after reconstitution.

3 months, -25~-15°C under sterile conditions after reconstitution.

Recommend to aliquot the protein into smaller quantities when first used and avoid repeated freeze-thaw cycles.

注意事项

1. Please operate with lab coats and disposable gloves, for your safety.
2. This product is for research use only.

产品数据

SDS-PAGE

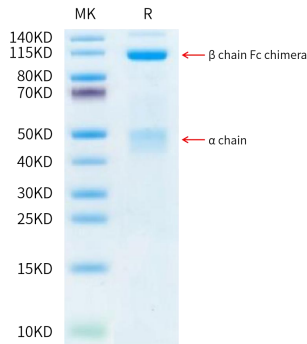


Figure 1. Human HGF R on SDS-PAGE under reduced condition. The purity is greater than 95%.

ELISA Data

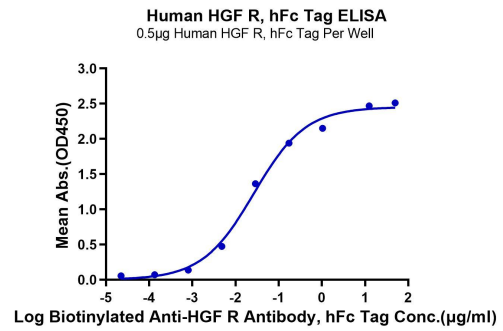


Figure 2. Immobilized Human HGFR, hFc Tag at 5µg/ml (100µl/Well) on the plate. Dose response curve for Biotinylated Anti-HGF R Antibody, hFc Tag with the EC50 of 26.7ng/ml determined by ELISA

ELISA Data

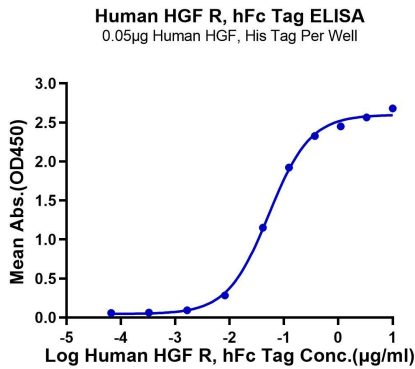


Figure 3. Immobilized Human HGF, His Tag at 0.5µg/ml (100µl/Well) on the plate. Dose response curve for Human HGF R, hFc Tag with the EC50 of 52.8ng/ml determined by ELISA.