

Recombinant Human GM-CSF Protein, His tag

产品信息

产品名称	产品编号	规格
Recombinant Human GM-CSF Protein, His tag	91113ES10	10 µg
	91113ES60	100 µg
	91113ES76	500 µg

产品简介

Granulocyte-macrophage colony-stimulating factor (GM-CSF), is a monomer glycoprotein that stimulates the growth and differentiation of hematopoietic progenitor cells of different lineages, including granulocytes, macrophages, eosinophils, and erythrocytes.

性能参数

Synonyms	Granulocyte-Macrophage Colony-Stimulating Factor, GM-CSF, CSF-2, MGI-1GM, Pluripoietin- α
Uniprot No.	P04141
Source	Recombinant Human GM-CSF Protein is expressed from HEK293 Cells with His tag at the N-terminal. It contains Ala18-Glu144.
Molecular Weight	The protein has a predicted MW of 16.41 kDa. And it migrates as 20-30 kDa under reducing (R) condition (SDS-PAGE) due to glycosylation.
Purity	> 95% as determined by SDS-PAGE.
Endotoxin	<0.01 EU per 1µg of the protein by the LAL method.
Formulation	Lyophilized from 0.22 µm filtered solution in PBS (pH 7.4).
Reconstitution	Centrifuge tubes before opening. Dissolve lyophilized protein with sterile water to ensure the concentration is greater than 100 ug/mL.

储存条件

The product should be stored at -25~-15°C for 1 year from date of receipt.

2-7 days, 2~8 °C under sterile conditions after reconstitution.

3 months, -25~-15°C under sterile conditions after reconstitution.

Recommend to aliquot the protein into smaller quantities when first used and avoid repeated freeze-thaw cycles.

注意事项

1. Please operate with lab coats and disposable gloves, for your safety.
2. This product is for research use only.

产品数据

SDS-PAGE

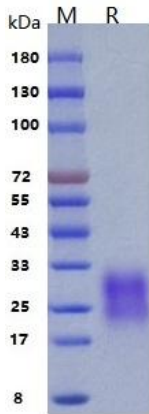


Figure 1. Human GM-CSF on SDS-PAGE under reduced condition. The purity is greater than 95%.

Bioactivity-Cell based assay

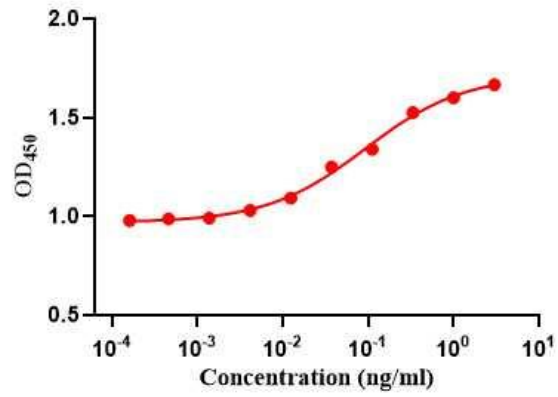


Figure 2. The ED₅₀ as determined by a cell proliferation assay using human TF-1 cells is less than 0.1 ng/mL, corresponding to a specific activity of > 1.0 × 10⁷ IU/mg.