

Recombinant Human CD161 Protein, His Tag

产品信息

产品名称	产品编号	规格
Recombinant Human CD161 Protein, His Tag	93603ES25	25 µg
	93603ES60	100 µg
	93603ES76	500 µg

产品简介

CD161 is a lectin-like receptor present on NK cells and rare T-cell subsets.

性能参数

Synonyms	KLRB1; CLEC5B; NKRP1A; NKR-P1A; HNKR-P1a; CD161; Ly59; NKR; NKRP1; NKR-P1; NKRP1ANKR
Uniprot No.	Q12918-1
Source	Recombinant Human CD161 Protein is expressed from HEK293 cells with His tag at the C-terminal. It contains Gln67-Ser225.
Molecular Weight	The protein has a predicted MW of 19.6 kDa. Due to glycosylation, the protein migrates to 38-45 kDa based on SDS-PAGE result.
Purity	> 95% as determined by SDS-PAGE and HPLC.
Endotoxin	<1.0 EU per 1µg of the protein by the LAL method.
Formulation	Lyophilized from 0.22 µm filtered solution in PBS (pH 7.4). Normally 8% trehalose is added as protectant before lyophilization.
Reconstitution	Centrifuge tubes before opening. Dissolve lyophilized protein with sterile water to ensure the concentration is greater than 100 µg/mL.

储存条件

The product should be stored at -25~-15°C for 1 year from date of receipt.

2-7 days, 2~8 °C under sterile conditions after reconstitution.

3 months, -25~-15°C under sterile conditions after reconstitution.

Recommend to aliquot the protein into smaller quantities when first used and avoid repeated freeze-thaw cycles.

注意事项

1. Please operate with lab coats and disposable gloves, for your safety.

2.This product is for research use only.

产品数据

SDS-PAGE

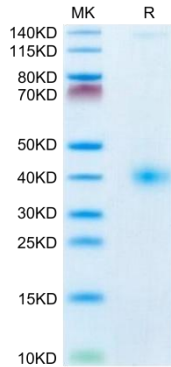


Figure 1. Human CD161 on SDS-PAGE under reduced condition. The purity is greater than 95%.

SEC-HPLC

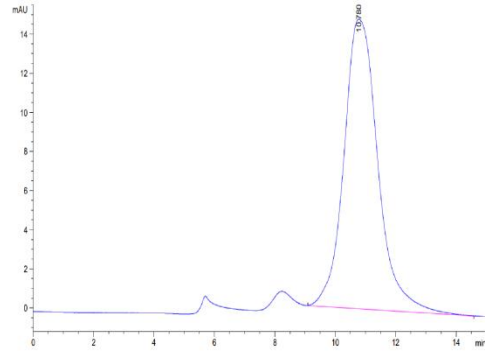


Figure 2. The purity of Human CD161 is greater than 95% as determined by SEC-HPLC.

ELISA

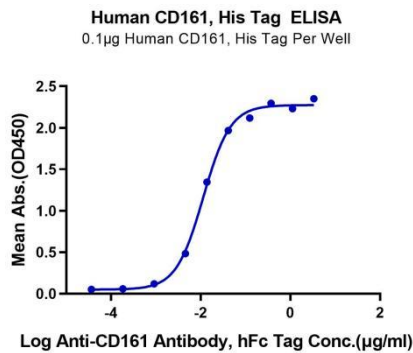


Figure 3. Immobilized Human CD161, His Tag at 1 $\mu\text{g/mL}$ (100 $\mu\text{L/Well}$) on the plate. Dose response curve for Anti-CD161 Antibody, hFc Tag with the EC_{50} of 11.4 ng/mL determined by ELISA (QC Test).

SPR

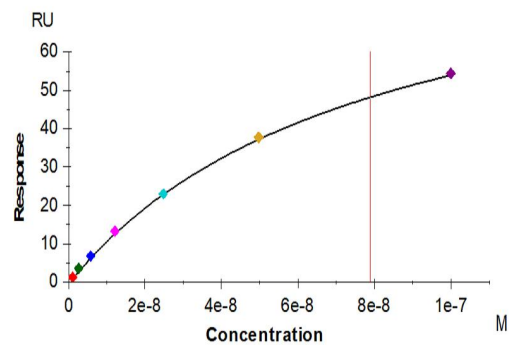


Figure 4. Anti-CD161 Antibody, hFc tag captured on CM5 Chip via Anti-hFc IgG can bind Human CD161, His Tag with an affinity constant of 78.8 nM as determined in SPR assay (Biacore T200).