

Recombinant Human P-Selectin/CD62P Protein, His-Avi Tag

产品信息

产品名称	产品编号	规格
Recombinant Human P-Selectin/CD62P Protein, His-Avi Tag	93923ES25	25 µg
	93923ES60	100 µg
	93923ES76	500 µg

产品简介

P-Selectin, a member of the Selectin family, is a cell surface glycoprotein expressed by activated platelets and endothelial cells, translocated to the cell surface within minutes, from alpha granules of platelets or Weibel-Palade bodies of endothelial cells. P-Selectin plays a role in the adhesion of leukocytes and neutrophils to the endothelium.

性能参数

Synonyms	FLJ45155; GMP140; GRMP; PADGEM; PSEL; P-Selectin; SELP; CD62P; CD62; LECAM3
Uniprot No.	P16109
Source	Recombinant Human P-Selectin/CD62P Protein is expressed from HEK293 cells with His tag and Avi tag at the C-terminal. It contains Trp42-Ala771.
Molecular Weight	The protein has a predicted MW of 82.9 kDa. Due to glycosylation, the protein migrates to 100-120 kDa based on SDS-PAGE result.
Purity	> 95% as determined by SDS-PAGE and HPLC.
Endotoxin	<1.0 EU per 1µg of the protein by the LAL method.
Formulation	Lyophilized from 0.22 µm filtered solution in PBS (pH 7.4). Normally 5% trehalose is added as protectant before lyophilization.
Reconstitution	Centrifuge tubes before opening. Dissolve lyophilized protein with sterile water to ensure the concentration is greater than 100 µg/mL.

储存条件

The product should be stored at -25~-15°C for 1 year from date of receipt.

2-7 days, 2~8 °C under sterile conditions after reconstitution.

3 months, -25~-15°C under sterile conditions after reconstitution.

Recommend to aliquot the protein into smaller quantities when first used and avoid repeated freeze-thaw cycles.

注意事项

1. Please operate with lab coats and disposable gloves, for your safety.
2. This product is for research use only.

产品数据

SDS-PAGE



Figure 1. Human P-Selectin/CD62P on SDS-PAGE under reduced condition. The purity is greater

SEC-HPLC

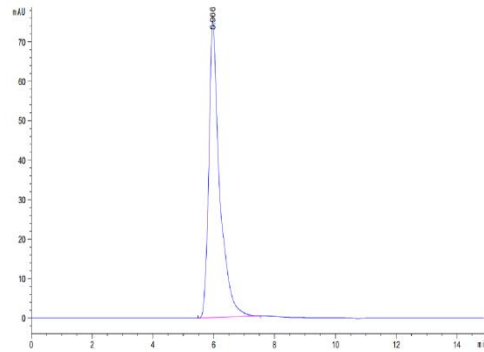


Figure 2. The purity of Human P-Selectin/CD62P is greater than 95% as determined by SEC-HPLC.

ELISA

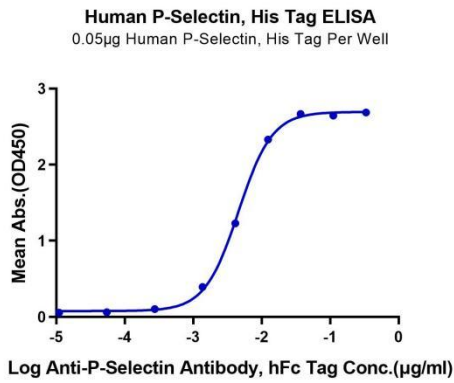


Figure 3. Immobilized Human P-Selectin, His Tag at 0.5 μ g/mL (100 μ L/Well) on the plate. Dose response curve for Anti-P-Selectin Antibody, hFc Tag with the EC_{50} of 4.6 ng/mL determined by ELISA.