

β -Tubulin, Mouse mAb

产品信息

产品名称	产品编号	规格
β -Tubulin, Mouse mAb	30301ES40	40 μ L(>20 次)
	30301ES60	100 μ L
	30301ES80	1 mL

产品简介

微管蛋白是一类含有多个成员的蛋白质家族。其最常见的成员是 α -微管蛋白和 β -微管蛋白,它们是组成微管的主要成分,这两种微管蛋白具有相似的三维结构,能够紧密地结合成二聚体,作为微管组装的亚基。 β 亚基是由 455 个氨基酸组成,分子量约为 55 kDa。本品常作为一种内部参照用于相关免疫学实验。

产品应用

建议稀释浓度: WB: 1:5000-1:20000; IHC: 1:100-1:500; IF: 1:200-1:500; ICC: 1:100; ELISA: 1:5000-1:10000;

产品信息

别名	β -Tubulin,Beta 4 tubulin; TBB5; TUBB2; TUBB2A; tubulin beta 2A; beta tubulin; tubulin beta chain
SwissProt ID	P07437
基因 ID	203068
免疫原	KLH conjugated synthetic peptide derived from human Beta tubulin;
缓冲液	0.01M TBS(pH7.4) with 1% BSA, 0.03% Proclin300 and 50% Glycerol
分子量	55KD
克隆类型	Monoclonal Antibody
亚型	IgG ₁
宿主	Mouse
物种反应	Human,Mouse,Rat(predicted:Chicken, Dog, Pig, Cow, Rabbit, Sheep, GuineaPig, Monkey, Insct, Yeast)
推荐应用	WB, IHC-F/IHC-P, IF/ICC, ELISA
细胞定位	细胞质, 细胞骨架
研究领域	细胞生物学与发育生物学

储存条件

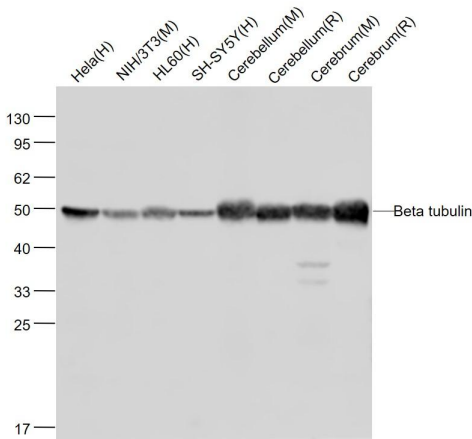
-25 ~ -15°C分装保存, 尽量避免反复冻融。

注意事项

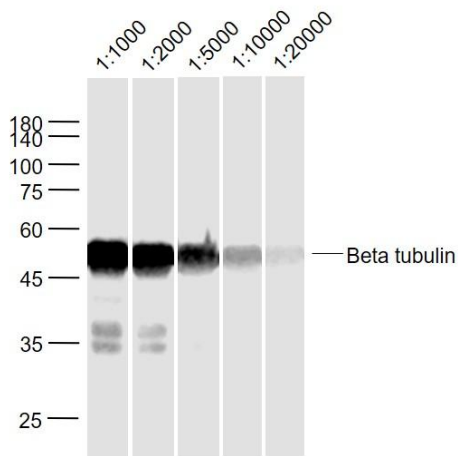
- 1) 使用前先离心，以免造成不必要的损失。
- 2) 为了您的安全和健康，请穿实验服并戴一次性手套操作。
- 3) 本产品仅作科研用途！

产品数据

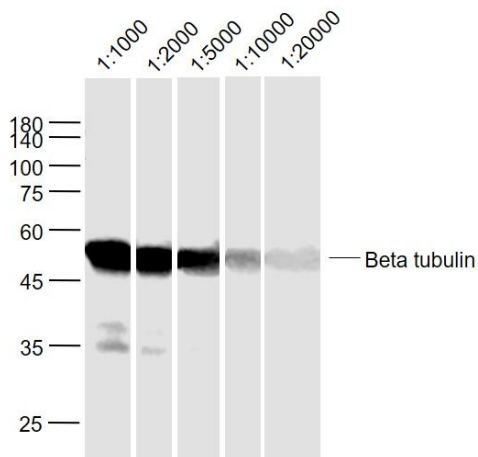
Western blot



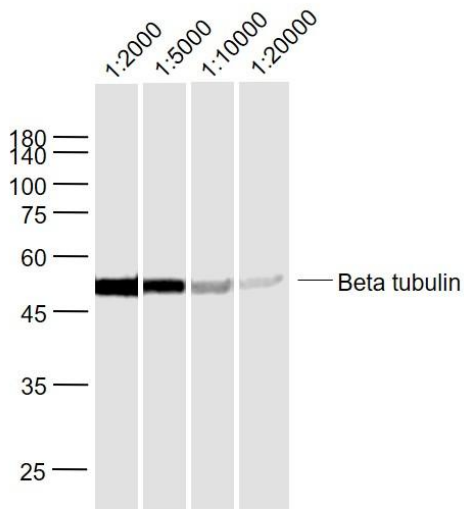
Western blot analysis of these sample using beta tubulin antibody at 1/1000 dilution.



Western blot analysis of Cerebrum(Rat) Lysate using Beta tubulin at antibody 1/2000~1/20000 dilution.

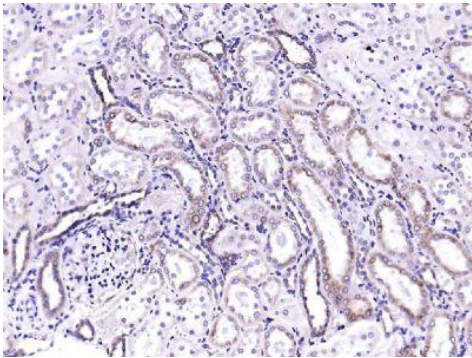


Western blot analysis of Cerebrum(Mouse) Lysate using Beta tubulin at antibody 1/1000~1/20000 dilution.

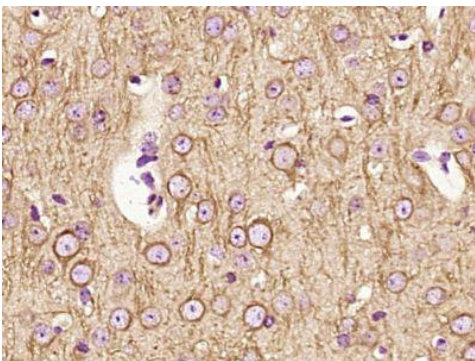


Western blot analysis of HeLa(Human) Lysate using Beta tubulin at antibody 1/2000~1/20000 dilution.

IHC



IHC analysis of Paraformaldehyde fixed, paraffin-embedded (rat kidney); Antigen retrieval by boiling in sodium citrate buffer (pH6.0) for 15min; Block endogenous peroxidase by 3% hydrogen peroxide for 20 minutes; Blocking buffer (normal goat serum) at 37°C for 30min; Antibody incubation with beta tubulin antibody.



IHC analysis of Paraformaldehyde fixed, paraffin-embedded (Mouse brain); Antigen retrieval by boiling in sodium citrate buffer (pH6.0) for 15min; Block endogenous peroxidase by 3% hydrogen peroxide for 20 minutes; Blocking buffer (normal goat serum) at 37°C for 30min; Antibody incubation with beta tubulin Antibody.