

Recombinant Human PDL2/B7-DC Protein, His Tag

产品信息

产品名称	产品编号	规格
Recombinant Human PDL2/B7-DC Protein, His Tag	93591ES25	25 µg
	93591ES60	100 µg
	93591ES76	500 µg
	93591ES80	1 mg

产品简介

Programmed death ligand 2 (PD-L2) is a type I membrane protein that is a member of the B7 protein family. PD-L2 consists of an extracellular region with a V-like and a C-like Ig domain, a transmembrane region, and a short cytoplasmic domain. PD-L2 was expressed in antigen presenting cells, placental endothelial cells, medullary thymic epithelial cells, B cells, monocytes and dendritic cells.

性能参数

Synonyms	PDL2, Butyrophilin B7-DC, CD273, PDCD1 ligand 2, PDCD1L2, PDCD1LG2, B7DC, bA574F11.2
Uniprot No.	Q9BQ51
Source	Recombinant Human B7-H3 Protein is expressed from HEK293 Cells with His tag at the C-terminal. It contains Leu20-Pro219.
Molecular Weight	The protein has a predicted MW of 24.49 kDa. And it migrates as 25-33 kDa under reducing (R) condition (SDS-PAGE) due to glycosylation.
Purity	> 95% as determined by SDS-PAGE.
Endotoxin	<1.0 EU per 1µg of the protein by the LAL method.
Formulation	Lyophilized from 0.22 µm filtered solution in PBS (pH 7.4).
Reconstitution	Centrifuge tubes before opening. The concentration of protein solution used for lyophilization is generally 1mg/mL. Dissolve lyophilized protein with sterile water to ensure the concentration is greater than 100 µg/mL.

储存条件

The product should be stored at -25~-15°C for 1 year from date of receipt.

2-7 days, 2~8 °C under sterile conditions after reconstitution.

3 months, -25~-15°C under sterile conditions after reconstitution.

Recommend to aliquot the protein into smaller quantities when first used and avoid repeated freeze-thaw cycles.

注意事项

1. Please operate with lab coats and disposable gloves, for your safety.
2. This product is for research use only.

产品数据

SDS-PAGE

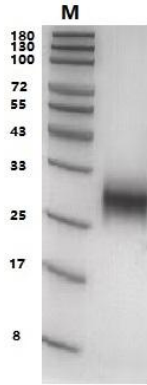


Figure 1. Human PD-L2 on SDS-PAGE under reduced condition.
The purity is greater than 95%.

Bioactivity -SPR Data

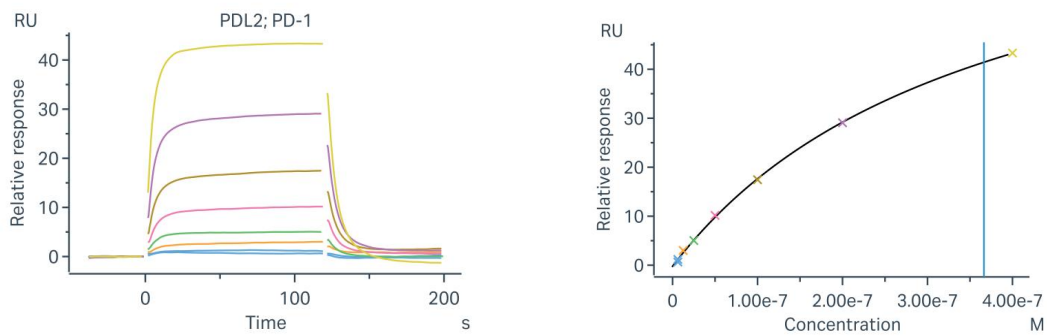


Figure 2. Human PD-1 tag free immobilized on CM5 chip can bind human PDL2, his Tag with an affinity constant of 0.366 μM as determined in a SPR assay (Biacore 8K).