

Recombinant Human NY-ESO-1 (HLA-A*02:01) (His-Avi Tag)

产品信息

产品名称	产品编号	规格
Recombinant Human NY-ESO-1 (HLA-A*02:01) (His-Avi Tag)	93007ES25	25 µg
	93007ES60	100 µg
	93007ES76	500 µg

产品简介

NY-ESO-1 or New York esophageal squamous cell carcinoma 1 is a well-known cancer-testis antigen (CTAs) with re-expression in numerous cancer types. Its ability to elicit spontaneous humoral and cellular immune responses, together with its restricted expression pattern, have rendered it a good candidate target for cancer immunotherapy.

性能参数

Synonyms	MHC; MY-ESO-1; CT6.1; LAGE-2; CTAG1; CTAG1B; ESO1CTAG; LAGE2A; NY-ESO-1
Uniprot No.	A0A140T913(HLA-A*02:01)&P61769(B2M)&SLLMWITQV
Source	Recombinant Human NY-ESO-1 (HLA-A*02:01) Protein is expressed from HEK293 Cells with His tag and Avi tag at the C-terminal. It contains Gly25-Thr305(HLA-A*02:01), Ile21-Met119(B2M) and SLLMWITQV peptide.
Molecular Weight	The protein has a predicted MW of 50.5 kDa. Due to glycosylation, the protein migrates to 55-60 kDa based on Tris-Bis PAGE result.
Purity	> 95% as determined by SDS-PAGE and HPLC.
Endotoxin	<1 EU per 1µg of the protein by the LAL method.
Formulation	Lyophilized from 0.22 µm filtered solution in PBS (pH 7.4). Normally 5% trehalose is added as protectant before lyophilization.
Reconstitution	Centrifuge tubes before opening. Reconstituting to a concentration more than 100 µg/mL is recommended (usually we use 1 mg/mL solution for lyophilization). Dissolve the lyophilized protein in distilled water.

储存条件

The product should be stored at -25~-15°C for 1 year from date of receipt.

2-7 days, 2~8 °C under sterile conditions after reconstitution.

3 months, -25~-15°C under sterile conditions after reconstitution.

Recommend to aliquot the protein into smaller quantities when first used and avoid repeated freeze-thaw cycles.

注意事项

1. Please operate with lab coats and disposable gloves, for your safety.
2. This product is for research use only.

产品数据

SDS-PAGE

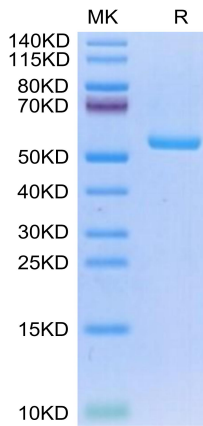


Figure 1. Human NY-ESO-1 (HLA-A*02:01) on SDS-PAGE under reduced condition. The purity is greater than 95%.

SEC-HPLC

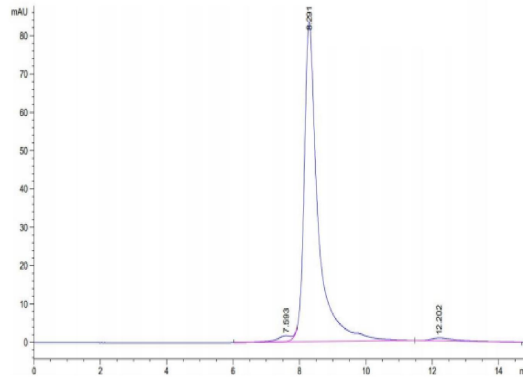


Figure 2. The purity of Human NY-ESO-1 (HLA-A*02:01) is greater than 95% as determined by SEC-HPLC.

ELISA Data

Human NY-ESO-1(HLA-A*02:01), His Tag ELISA
0.5µg Human NY-ESO-1(HLA-A*02:01), His Tag Per Well

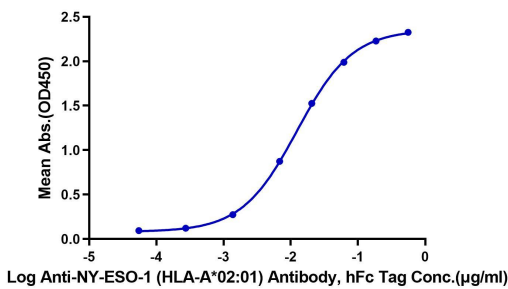


Figure 3. Immobilized Human NY-ESO-1 (HLA-A*02:01), at 5µg/ml (100µl/well) on the plate. Dose response curve for Anti-NY-ESO-1 (HLA-A*02:01) Antibody, hFc Tag with the EC50 of 12.4ng/ml determined by ELISA.