

Recombinant Human PD-L1/B7-H1 Protein, His tag

产品信息

产品名称	产品编号	规格
Recombinant Human PD-L1/B7-H1 Protein, His tag	94102ES25	25 µg
	94102ES60	100 µg
	94102ES76	500 µg
	94102ES80	1 mg

产品简介

PD-L1 is one of the ligands for PD-1 and plays a critical role in the regulation of T cell immunity. The PD-L1 protein belong to the B7 family of immune regulatory molecules. PD-L1 provides a molecular stop signal to the adaptive immune system helping to distinguish between self and foreign antigens. PD-L1 also plays a role in the development of immune tolerance by promoting T cell anergy and enhancing regulatory T cell development.

性能参数

Synonyms	PD-L1,CD274,B7-H1,PDCD1L1,PDCD1LG1,PDL1
Uniprot No.	Q9NZQ7
Source	Recombinant Human PDL1 Protein is expressed from HEK293 Cells with His tag at the C-terminal. It contains Phe 19- Thr 239.
Molecular Weight	The protein has a predicted MW of 26 kDa. And it migrates as an approximately 33 kDa under reducing condition in SDS-PAGE due to glycosylation.
Purity	> 95% as determined by SDS-PAGE
Endotoxin	<1 EU per 1µg of the protein by the LAL method.
Formulation	Lyophilized from 0.22 µm filtered solution in PBS (pH 7.4).
Reconstitution	Centrifuge tubes before opening. The concentration of protein solution used for lyophilization is generally 1mg/mL. Dissolve lyophilized protein with sterile water to ensure the concentration is greater than 100 µg/mL.

储存条件

The product should be stored at -25~-15°C for 1 year from date of receipt.

2-7 days, 2~8 °C under sterile conditions after reconstitution.

3 months, -25~-15°C under sterile conditions after reconstitution.

Recommend to aliquot the protein into smaller quantities when first used and avoid repeated freeze-thaw cycles.

注意事项

1. Please operate with lab coats and disposable gloves, for your safety.
2. This product is for research use only.

产品数据

SDS-PAGE

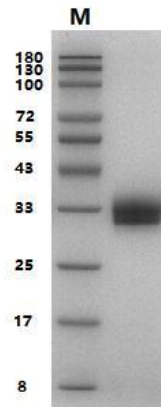


Figure 1. Human PDL1 on SDS-PAGE under reduced condition. The purity is greater than 90%.

Bioactivity -SPR Data

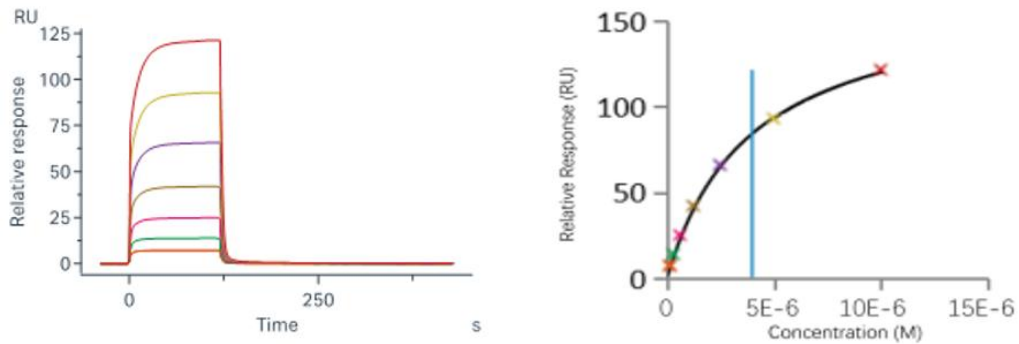


Figure 2 . Human PD-1, Tag free immobilized on CM5 chip can bind Human PDL1, His Tag with an affinity constant of $3.95 \mu\text{M}$ as determined in a SPR assay (Biacore 8K).