

Recombinant Human TL-1A/TNFSF15 Protein

产品信息

产品名称	产品编号	规格
Recombinant Human TL-1A/TNFSF15 Protein	90616ES10	10 µg
	90616ES60	100 µg
	90616ES76	500 µg

产品简介

TL-1A belongs to the TNF superfamily of ligands. It is expressed predominantly in endothelial cells, and to a lesser extent in the placenta, lung, kidney, skeletal muscle, pancreas, small intestine and colon. TL-1A inhibits endothelial cell proliferation and angiogenesis.

性能参数

Synonyms	TL1A; TNF-like 1
Accession	O95150
Source	E.coli-derived Human TL-1A protein,Leu22-Leu251.
Molecular Weight	Approximately 20.5 kDa
Purity	> 97% by SDS-PAGE.
Endotoxin	< 1.0 EU per 1µg of the protein by the LAL method.
Formulation	Lyophilized from a 0.2 µm filtered concentrated solution in PBS, pH 7.4, with 1% BSA.
Reconstitution	1.We recommend that this vial be briefly centrifuged prior to opening to bring the contents to the bottom. 2.Reconstitute in sterile PBS, pH 7.4, with 0.1% BSA to a concentration of 0.1-1.0 mg/mL. 3.Stock solutions should be apportioned into working aliquots and stored at ≤-20 °C. 4.Further dilutions should be made in PBS or sterile distilled water .

储存条件

The product should be stored at -25~-15°C for 1 year.

1 month, 2~8 °C under sterile conditions after reconstitution.

3 months, -25~-15°C °C under sterile conditions after reconstitution.

Recommend to aliquot the protein into smaller quantities when first used and avoid repeated freeze-thaw cycles.

注意事项

1.Please operate with lab coats and disposable gloves, for your safety.

2.This product is for research use only.

产品数据

SDS-PAGE

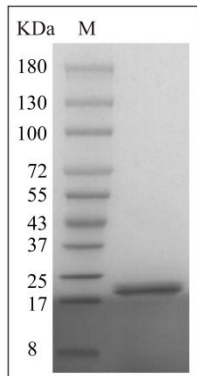


Figure 1. Human TL-1A Protein on SDS PAGE under reduced condition.. The purity is greater than 97%.

Cell Based Assay

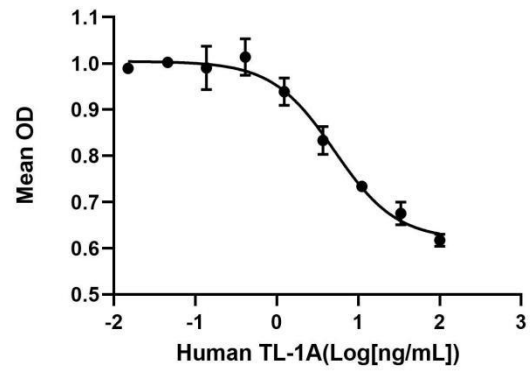


Figure 2. The ED₅₀ as determined by its ability to induce apoptosis using human TF-1 cells is less than 5 ng/mL..