

Recombinant Human NY-ESO-1 (HLA-A*02:01) Protein, His-Avi Tag

产品信息

产品名称	产品编号	规格
Recombinant Human NY-ESO-1 (HLA-A*02:01) Protein, His-Avi Tag	93052ES60	100 µg
	93052ES76	500 µg
	93052ES80	1 mg

产品描述

NY-ESO-1 or New York esophageal squamous cell carcinoma 1 is a well-known cancer-testis antigen (CTAs) with re-expression in numerous cancer types. Its ability to elicit spontaneous humoral and cellular immune responses, together with its restricted expression pattern, have rendered it a good candidate target for cancer immunotherapy.

产品性质

Synonyms	MHC; MY-ESO-1; CT6.1; LAGE-2; CTAG1; CTAG1B; ESO1CTAG; LAGE2A; NY-ESO-1
Uniprot No.	A0A140T913(HLA-A*02:01)&P61769(B2M)&SLLMWITQC
Source	Recombinant Human NY-ESO-1 (HLA-A*02:01) Protein is expressed from HEK293 Cells with His tag and Avi tag at the C-terminal. It contains Gly25-Thr305(HLA-A*02:01), Ile21-Met119(B2M) and SLLMWITQC peptide.
Molecular Weight	The protein has a predicted MW of 50.5 kDa. Due to glycosylation, the protein migrates to 51-60 kDa based on Tris-Bis PAGE result.
Purity	> 95% as determined by SDS-PAGE and HPLC
Endotoxin	< 1.0 EU per 1µg of the protein by the LAL method.
Formulation	Supplied as 0.22µm filtered solution in PBS, 100mM L-arginine (pH 7.4).

运输与保存方法

The products are shipped with ice pack and can be stored at -80°C for 1 year.

Recommend to aliquot the protein into smaller quantities for optimal storage. Please avoid freeze-thaw cycles.

注意事项

1. For your safety and health, please wear lab coats and disposable gloves for operation.
2. For research use only!

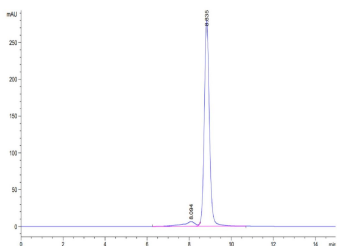
产品数据

Tris-Bis PAGE



Human NY-ESO-1 (HLA-A*02:01) on Tris-Bis PAGE under reduced conditions. The purity is greater than 95%.

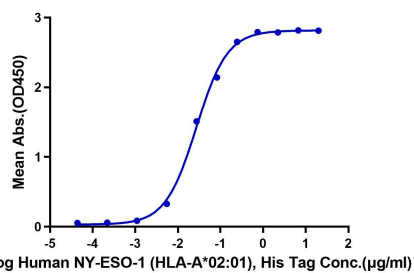
SEC-HPLC



The purity of Human NY-ESO-1 (HLA-A*02:01) is greater than 95% as determined by SEC-HPLC.

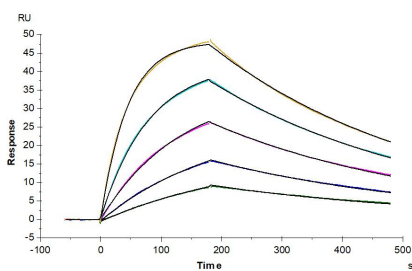
ELISA Data

Human NY-ESO-1 (HLA-A*02:01), His Tag ELISA
 0.5µg Anti-NY-ESO-1 (HLA-A*02:01) Antibody, hFc Tag Per Well



Immobilized Anti-NY-ESO-1 (HLA-A*02:01) Antibody, hFc Tag at 5µg/ml (100µl/well) on the plate. Dose response curve for Human NY-ESO-1 (HLA-A*02:01) , His Tag with the EC₅₀ of 27.1ng/ml determined by ELISA.

SPR Data



Anti-NY-ESO-1 (HLA-A*02:01) Antibody, hFc Tag captured on CM5 Chip via Protein A can bind Human NY-ESO-1 (HLA-A*02:01) , His Tag with an affinity constant of 13.43 nM as determined in SPR assay.

HB230207