

Biotinylated Cynomolgus PSMA/FOLH1 Protein, His Tag

产品信息

产品名称	产品编号	规格
	93164ES60	100 µg
Biotinylated Cynomolgus PSMA/FOLH1 Protein, His Tag	93164ES76	500 µg
	93164ES80	1 mg

产品描述

Prostate-specific membrane antigen (PSMA) is an enzyme that in humans is encoded by the FOLH1 (folate hydrolase 1) gene, also known as Glutamate carboxypeptidase II (GCPII). Human PSMA is highly expressed in the prostate, roughly a hundred times greater than in most other tissues. In some prostate cancers, PSMA is the second-most upregulated gene product, with an 8- to 12-fold increase over levels in noncancerous prostate cells.

产品性质

Synonyms	GCP2; PSMA; PSMAFGCP; FGCP; Folate hydrolase 1; FOLHNAALADase I; GCPII; GCPIImGCP; NAALAD1; NAALADase I; NAALADase; FOLH1; GIG27; PSM; FOLH; mGCP
Accession	A0A2K5VNZ0
Source	Recombinant Biotinylated Cynomolgus PSMA/FOLH1 Protein is expressed from HEK293 Cells with His tag at the N-terminal. It contains Lys44-Ala750.
Molecular Weight	The protein has a predicted MW of 80.6 kDa. Due to glycosylation, the protein migrates to 90-110 kDa based on Tris-Bis PAGE result.
Physical Appearance	Liquid Solution
Purity	> 95% as determined by SDS-PAGE
Endotoxin	< 1.0 EU per 1µg of the protein by the LAL method.
Formulation	Supplied as 0.22µm filtered solution in PBS (pH 7.4).

运输与保存方法

The products are shipped with ice pack and can be stored at -80°C for 1 year.

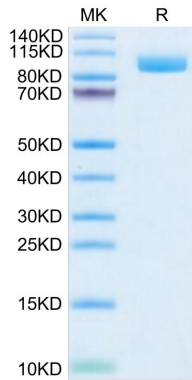
Recommend to aliquot the protein into smaller quantities for optimal storage. Please do not repeated freeze-thaw cycles.

注意事项

1. For your safety and health, please wear lab coats and disposable gloves for operation.
2. For research use only!

产品数据

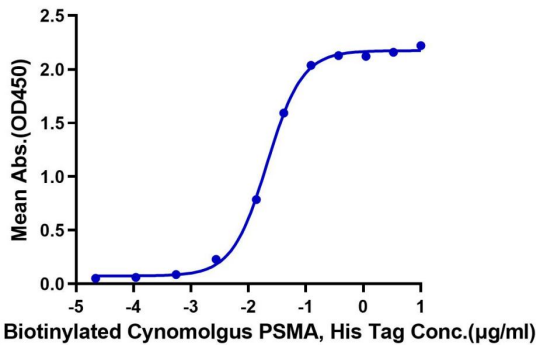
Tris-Bis PAGE



Biotinylated Cynomolgus PSMA on Tris-Bis PAGE under reduced condition. The purity is greater than 95%.

ELISA Data

Biotinylated Cynomolgus PSMA, His Tag ELISA 0.05 μ g Anti-PSMA Antibody, hFc Tag Per Well



Immobilized Anti-PSMA Antibody, hFc Tag at 0.5 μ g/mL (100 μ l/Well) on the plate. Dose response curve for Biotinylated Cynomolgus PSMA, His Tag with the EC₅₀ of 21.2ng/mL determined by ELISA.