

## Biotinylated Human CLEC12A/MICL/CLL-1 Protein, His-Avi Tag

### 产品信息

产品名称	产品编号	规格
	93159ES60	100 µg
Biotinylated Human CLEC12A/MICL/CLL-1 Protein, His-Avi Tag	93159ES76	500 µg
	93159ES80	1 mg

### 产品描述

C-type lectin domain family 12 member A (CLEC12A), also known as C-type lectin-like molecule 1 (CLL1), dendritic cell-associated lectin 2 (DCAL-2), myeloid inhibitory C-type lectin-like receptor (MICL), killer cell lectin like receptor-1 (KLRL1) and CD371, is a member of the C-type lectin receptor superfamily. C-type lectins are the most diverse and prevalent lectin family in immunity. Particular interest has recently been attracted by the C-type lectin-like receptors on NK cells, which appear to regulate the activation/inhibitory balance of these cells, controlling cytotoxicity and cytokine production. CLEC12A receptor has emerged as a leukemia-associated and cancer stem cell marker in myeloid malignancies. The CLEC12A TriKE induced robust NK-cell specific proliferation, enhanced NK-cell activation, and killing of both AML cell lines and primary patient-derived AML blasts in vitro while sparing healthy HSCs.

### 产品性质

<b>Synonyms</b>	MICL; CLL-1; CLEC12A; CLL1; DCAL2; DCAL-2; CD371; CD303; CLECSF11; CLECSF7; DLEC; HECL; PRO34150; DCAL-2
<b>Uniprot No.</b>	Q5QGZ9-2
<b>Source</b>	Recombinant Biotinylated Human CLEC12A/MICL/CLL-1 Protein is expressed from HEK293 Cells with His tag at the N-terminal and Avi tag at the C-terminal. It contains His65-Ala265.
<b>Molecular Weight</b>	The protein has a predicted MW of 26.4 kDa. Due to glycosylation, the protein migrates to 38-50 kDa based on Tris-Bis PAGE result.
<b>Physical Appearance</b>	Sterile Filtered White lyophilized (freeze-dried) powder.
<b>Purity</b>	> 95% as determined by SDS-PAGE and HPLC
<b>Endotoxin</b>	< 1.0 EU per 1µg of the protein by the LAL method.
<b>Formulation</b>	Lyophilized from 0.22µm filtered solution in PBS (pH 7.4). Normally 5% trehalose is added as protectant before lyophilization.
<b>Reconstitution</b>	Centrifuge tubes before opening. Reconstituting to a concentration more than 100µg/mL is recommended. Dissolve the lyophilized protein in distilled water.

### 运输与保存方法

The products are shipped with ice pack and can be stored at -20°C for 1 year.

2-7 days, 2 to 8 °C under sterile conditions after reconstitution.

3 -6 months, -20 to -80°C under sterile conditions after reconstitution.

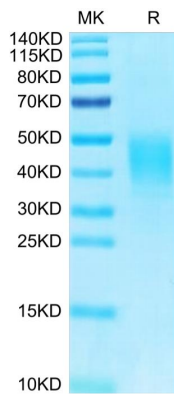
Recommend to aliquot the protein into smaller quantities for optimal storage. Please avoid freeze-thaw cycles.

### 注意事项

1. For your safety and health, please wear lab coats and disposable gloves for operation.
2. For research use only!

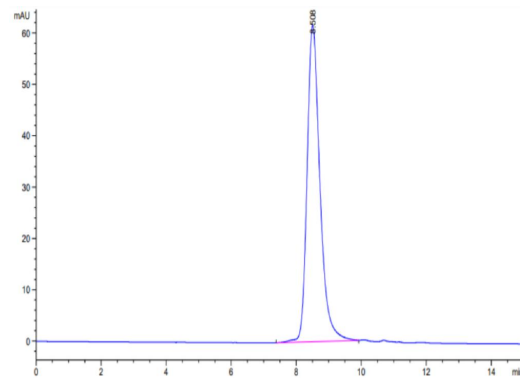
## 产品数据

### Tris-Bis PAGE



Biotinylated Human CLEC12A on Tris-Bis PAGE under reduced condition. The purity is greater than 95%.

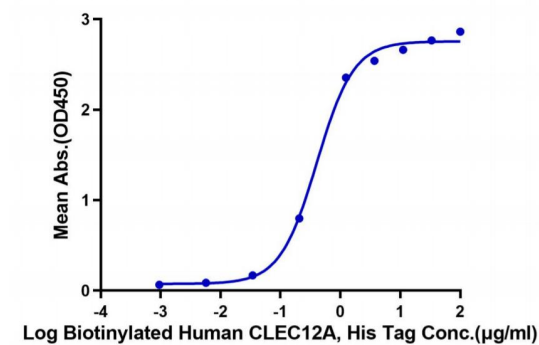
### SEC-HPLC



The purity of Biotinylated Human CLEC12A is greater than 95% as determined by SEC-HPLC.

### ELISA Data

**Biotinylated Human CLEC12A, His Tag ELISA**  
 0.1 $\mu$ g Anti-CLEC12A Antibody, hFc Tag Per Well



Immobilized Anti-CLEC12A Antibody, hFc Tag at 1 $\mu$ g/mL (100 $\mu$ l/well) on the plate. Dose response curve for Biotinylated Human CLEC12A, His Tag with the EC<sub>50</sub> of 0.41 $\mu$ g/mL determined by ELISA.