

Biotinylated Human EpCAM/TROP1 Protein, His-Avi Tag

产品信息

产品名称	产品编号	规格
Biotinylated Human EpCAM/TROP1 Protein, His-Avi Tag	93144ES60	100 µg
	93144ES76	500 µg
	93144ES80	1 mg

产品描述

Epithelial Cellular Adhesion Molecule (EpCAM), also known as KS1/4, gp40, GA733-2, 17-1A, and TROP-1, is a 40 kDa transmembrane glycoprotein that consists of a 242 amino acid (aa) extracellular domain with two EGF-like repeats, a 23 aa transmembrane segment, and a 26 aa cytoplasmic domain. It is up-regulated on actively proliferating epithelial tissues, during adult liver regeneration, and on many epithelial cell-derived carcinomas. EpCAM functions as a homophilic cell adhesion molecule. It associates into tetramers and forms complexes in cis with Claudin-7, CD44v6, TSPAN8, CD9, Integrin alpha 3, and Annexin A1 that can interfere with cell adhesion.

产品性质

Synonyms	CD326; EGP; EGP-2; EGP314; EGP40; EpCAM; ACSTD1; DIAR5; gp40; HNPCC8; MOC31; TACST-1; TACSTD1; TROP1; ESA; KSA; MIC18; MK1
Uniprot No.	P16422
Source	Recombinant Biotinylated Human EpCAM/TROP1 Protein is expressed from HEK293 Cells with His tag and Avi tag at the C-terminal. It contains Gln24-Lys245.
Molecular Weight	The protein has a predicted MW of 30.1 kDa. Due to glycosylation, the protein migrates to 30-45 kDa based on Tris-Bis PAGE result.
Physical Appearance	Sterile Filtered White lyophilized (freeze-dried) powder.
Purity	> 95% as determined by SDS-PAGE and HPLC
Endotoxin	< 1.0 EU per 1µg of the protein by the LAL method.
Formulation	Lyophilized from 0.22µm filtered solution in PBS (pH 7.4). Normally 5% trehalose is added as protectant before lyophilization.
Reconstitution	Centrifuge tubes before opening. Reconstituting to a concentration more than 100µg/mL is recommended. Dissolve the lyophilized protein in distilled water.

运输与保存方法

The products are shipped with ice pack and can be stored at -20°C for 1 year.

2-7 days, 2 to 8 °C under sterile conditions after reconstitution.

3 -6 months, -20 to -80°C under sterile conditions after reconstitution.

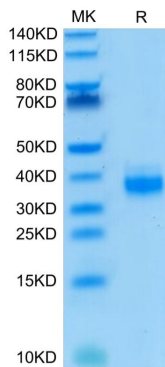
Recommend to aliquot the protein into smaller quantities for optimal storage. Please avoid freeze-thaw cycles.

注意事项

1. For your safety and health, please wear lab coats and disposable gloves for operation.
2. For research use only!

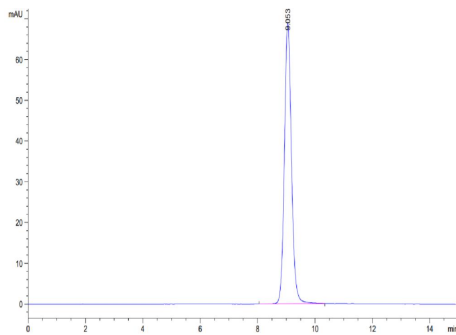
产品数据

Tris-Bis PAGE



Biotinylated Human EpCAM on Tris-Bis PAGE under reduced condition. The purity is greater than 95%.

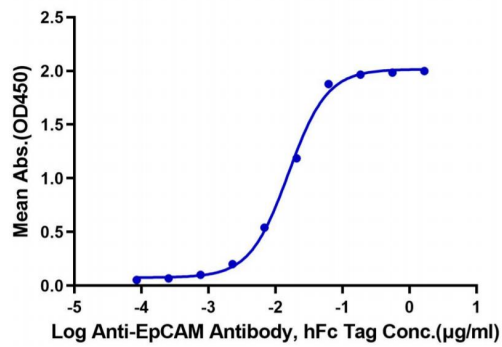
SEC-HPLC



The purity of Biotinylated Human EpCAM is greater than 95% as determined by SEC-HPLC.

ELISA Data

Biotinylated Human EpCAM, His Tag ELISA
0.02 μ g Biotinylated Human EpCAM, His Tag Per Well



Immobilized Biotinylated Human EpCAM, His Tag at 0.2 μ g/mL (100ul/Well) on the plate. Dose response curve for Anti-EpCAM Antibody, hFc Tag with the EC_{50} of 15.6ng/mL determined by ELISA.