

Recombinant FITC-Labeled Human Siglec-2/CD22 Protein, hFc Tag

产品信息

| 产品名称 | 产品编号 | 规格 |
|---|-----------|--------|
| Recombinant FITC-Labeled Human Siglec-2/CD22 Protein, His-Avi Tag | 93213ES60 | 100 µg |

产品描述

Human Siglec-2, also known as B-cell antigen CD22 or B-lymphocyte cell adhesion molecule (BL-CAM), is a B-cell restricted glycoprotein that is expressed in the cytoplasm of progenitor B and pre-B cells and on the surface of mature B cells.

产品性质

| | |
|-------------------------|--|
| Synonyms | CD22 molecule; CD22; Siglec-2; B-cell receptor CD22; BL-CAM; SIGLEC2; |
| Uniprot No. | P20273-1 |
| Source | Recombinant FITC-Labeled Human Siglec-2/CD22 Protein is expressed from Expi293 with hFc tag at the C-terminal. It contains Asp20-Arg687. |
| Molecular Weight | The protein has a predicted MW of 101.9 kDa. Due to glycosylation, the protein migrates to 130-140 kDa based on Tris-Bis PAGE result. |
| Purity | > 95% as determined by SDS-PAGE. |
| Endotoxin | < 1.0 EU per 1µg of the protein by the LAL method. |
| Formulation | Supplied as 0.22µm filtered solution in PBS (pH 7.4). |

运输与保存方法

The products are shipped with ice pack and can be stored at -80°C for 1 year.

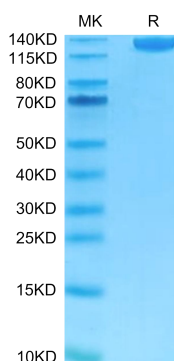
Recommend to aliquot the protein into smaller quantities for optimal storage. Please avoid freeze-thaw cycles.

注意事项

1. For your safety and health, please wear lab coats and disposable gloves for operation.
2. For research use only!

产品数据

Tris-Bis PAGE



FITC-Labeled Human Siglec-2/CD22 on Tris-Bis PAGE under reduced condition. The purity is greater than 95%.